

Anti-INADL antibody (1-100) (STJ113962)

STJ113962

GENERAL INFORMATION

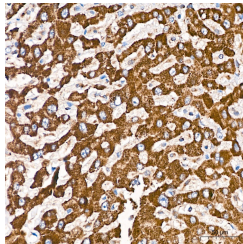
Product Type	Primary antibodies
Short Description	
Applications	WB/IHC-P/ELISA
Host/Source	Rabbit
Reactivity	Human/Mouse

PRODUCT PROPERTIES

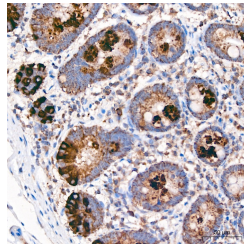
Clonality	Polyclonal
Clone ID	
Concentration	Lot specific
Conjugation	Unconjugated
Purification	Affinity purification
Dilution Range	WB:1:500-1:2000 IHC-P:1:50-1:200 ELISA:Recommended starting concentration is 1 µg/mL. Please optimize the concentration based on your specific assay requirements.
Formulation	PBS with 0.01% Thimerosal, 50% Glycerol, pH 7.3.
Isotype	IgG
Storage Instruction	Store at -20°C for up to 1 year from the date of receipt, and avoid repeat freeze-thaw cycles.

TARGET INFORMATION

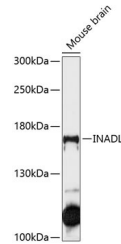
Gene ID	
Gene Symbol	PATJ
Uniprot ID	INADL_HUMAN
Immunogen	
Immunogen Region	1-100
Specificity	A synthetic peptide corresponding to a sequence within amino acids 1-100 of human INADL (NP_795352.2).
Immunogen Sequence	MPENPATDKLQVLQVLDRLK MKLQEKGDTSQNEKLSMFYE TLKSPLFNQILTLQQSIKQL KGQLNHIPSDCSANFDFSRLK
Sequence	GLLVFTDGSITNGNVHRPSN



Immunohistochemistry analysis of INADL in paraffin-embedded Human liver tissue using INADL Rabbit polyclonal antibody (STJ113962) at a dilution of 1:500 (40x lens). High pressure antigen retrieval performed with 0.01M Citrate Buffer (pH 6.0) prior to immunohistochemistry staining.



Immunohistochemistry analysis of INADL in paraffin-embedded Human colon tissue using INADL Rabbit polyclonal antibody (STJ113962) at a dilution of 1:500 (40x lens). High pressure antigen retrieval performed with 0.01M Citrate Buffer (pH 6.0) prior to immunohistochemistry staining.



Western blot analysis of lysates from mouse brain, using INADL Rabbit polyclonal antibody (STJ113962) at 1:1000 dilution. Secondary antibody: HRP Goat Anti-Rabbit IgG (H+L) (STJ5000626) at 1:10000 dilution. Lysates/proteins: 25 µg per lane. Blocking buffer: 3% nonfat dry milk in TBST. Detection: ECL Basic Kit. Exposure time: 90s.