

Anti-SEPT11 antibody (1-120) (STJ113941)

STJ113941

GENERAL INFORMATION

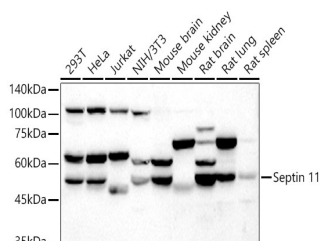
Product Type	Primary antibodies
Short Description	
Applications	WB/ELISA
Host/Source	Rabbit
Reactivity	Human/Mouse/Rat

PRODUCT PROPERTIES

Clonality	Polyclonal
Clone ID	
Concentration	Lot specific
Conjugation	Unconjugated
Purification	Affinity purification
Dilution Range	WB:1:2000-1:6000 ELISA:Recommended starting concentration is 1 µg/mL. Please optimize the concentration based on your specific assay requirements.
Formulation	PBS with 0.01% Thimerosal, 50% Glycerol, pH 7.3.
Isotype	IgG
Storage	Store at -20°C for up to 1 year from the date of receipt, and avoid repeat freeze-thaw cycles.
Instruction	

TARGET INFORMATION

Gene ID	55752
Gene Symbol	SEPTIN11
Uniprot ID	SEP11_HUMAN
Immunogen	
Immunogen Region	1-120
Specificity	Recombinant fusion protein containing a sequence corresponding to amino acids 1-120 of human Septin 11 (NP_060713.1). MAVAVGRPSNEELRNLSLSG HVGFDLPDQLVKNKSTSQGF CFNLCVGETGIGKSTLMDT LFNTKFESDPATHNEPGVRL
Immunogen Sequence	KARSYELQESNVRLKLTIVD TVGFGDQINKDDSYKPIVEY



Western blot analysis of extracts of various cell lines, using Septin 11 antibody (STJ113941) at 1:5000 dilution. Secondary antibody: HRP Goat Anti-rabbit IgG (H+L) (STJ5000656) at 1:10000 dilution. Lysates/proteins: 25 µg per lane. Blocking buffer: 3% non-fat dry milk in TBST. Detection: ECL Basic Kit. Exposure time: 90s.

This product is suitable for in-vitro studies under the RESEARCH USE ONLY [RUO] licence. This product must not be used as for diagnostic or other medical purposes.
St John's Laboratory Ltd, Knowledge Dock Business Centre, University Way, London, E16 2RD | Tel: 0208 223 3081