

Anti-IGF1 antibody (50-150) (STJ113891)

STJ113891

GENERAL INFORMATION

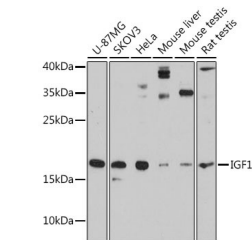
Product Type	Primary antibodies
Short Description	
Applications	WB/IHC-P/ELISA
Host/Source	Rabbit
Reactivity	Human/Mouse/Rat

PRODUCT PROPERTIES

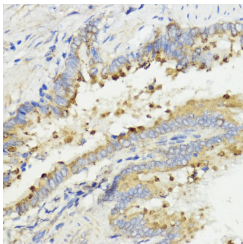
Clonality	Polyclonal
Clone ID	
Concentration	Lot specific
Conjugation	Unconjugated
Purification	Affinity purification
Dilution Range	WB:1:1500-1:3000 IHC-P:1:50-1:100 ELISA:Recommended starting concentration is 1 Mu g/mL. Please optimize the concentration based on your specific assay requirements.
Formulation	PBS with 0.09% Sodium Azide, 50% Glycerol, pH 7.3.
Isotype	IgG
Storage	Store at -20°C for up to 1 year from the date of receipt, and avoid repeat freeze-thaw cycles.
Instruction	

TARGET INFORMATION

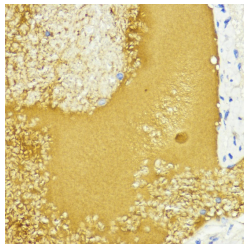
Gene ID	3479
Gene Symbol	IGF1
Uniprot ID	IGF1_HUMAN
Immunogen	
Immunogen Region	50-150
Specificity	A synthetic peptide corresponding to a sequence within amino acids 50-150 of human IGF1 (NP_000609.1).
Immunogen Sequence	PETLCGAELVDALQFVCGDR GFYFNKPTGYGSSRRAPQT GIVDECCFRSCDLRRLMYC APLKPAKSARSVRAQRHTDM PKTQKEVHLKNASRGSGAGNK N



Western blot analysis of extracts of various cell lines, using IGF1 antibody (STJ113891) at 1:3000 dilution. Secondary antibody: HRP Goat Anti-rabbit IgG (H+L) at 1:10000 dilution. Lysates/proteins: 25ug per lane. Blocking buffer: 3% nonfat dry milk in TBST. Detection: ECL Basic Kit. Exposure time: 90s.



Immunohistochemistry of paraffin-embedded rat lung using IGF1 antibody (STJ113891) at dilution of 1:100 (40x lens).



Immunohistochemistry of paraffin-embedded mouse liver using IGF1 antibody (STJ113891) at dilution of 1:100 (40x lens).

This product is suitable for in-vitro studies under the RESEARCH USE ONLY [RUO] licence. This product must not be used as for diagnostic or other medical purposes.
St John's Laboratory Ltd, Knowledge Dock Business Centre, University Way, London, E16 2RD | Tel: 0208 223 3081