

Anti-KDM3A antibody (975-1283) (STJ113876)

STJ113876

GENERAL INFORMATION

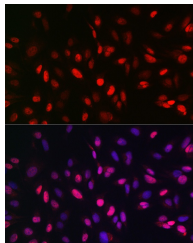
| | |
|--------------------------|-----------------------|
| Product Type | Primary antibodies |
| Short Description | |
| Applications | WB/IHC-P/IF/ICC/ELISA |
| Host/Source | Rabbit |
| Reactivity | Human |

PRODUCT PROPERTIES

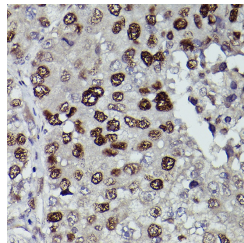
| | |
|----------------------|--|
| Clonality | Polyclonal |
| Clone ID | |
| Concentration | Lot specific |
| Conjugation | Unconjugated |
| Purification | Affinity purification |
| Dilution | WB:1:500-1:1000 |
| Range | IHC-P:1:50-1:200 IF/ICC:1:50-1:200 ELISA:Recommended starting concentration is 1 µg/mL. Please optimize the concentration based on your specific assay requirements. |
| Formulation | PBS with 0.05% Proclin300, 50% Glycerol, pH 7.3. |
| Isotype | IgG |
| Storage | Store at -20°C for up to 1 year from the date of receipt, and avoid repeat freeze-thaw cycles. |
| Instruction | |

TARGET INFORMATION

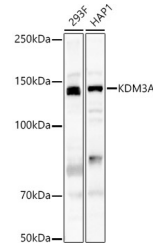
| | |
|---------------------------|--|
| Gene ID | 55818 |
| Gene Symbol | KDM3A |
| Uniprot ID | KDM3A_HUMAN |
| Immunogen | |
| Immunogen Region | 975-1283 |
| Specificity | A synthetic peptide corresponding to a sequence within amino acids 975-1283 of human KDM3A (NP_060903.2). |
| Immunogen Sequence | PVMVSGVHHKLNSELWKPEF FRKEFGGEQVDLVNCRNTNEI ITGATVGDFWDGFEDVPNRL KNEKEPMVLKLDWPPGEDF RDMMPSPRFDDLMANIPLPEY TRRDGKLNLSRLPNYFVRP DLGPKMYNAYGLITPEDRKY GTTNLHLDVSDAANVMVYVG IPKGCQCEQEEVLTKIQDGD SDELTIKRFIEGKEKPGALW HIYAAKDTEKIREFLKKVSE EQGQENPADHDPIHDQSWY |



Immunofluorescence analysis of U2OS cells using KDM3A Rabbit polyclonal antibody (STJ113876) at dilution of 1:100 (40x lens). Blue: DAPI for nuclear staining.



Immunohistochemistry analysis of paraffin-embedded human liver cancer using KDM3A Rabbit polyclonal antibody (STJ113876) at dilution of 1:100 (40x lens). Perform high pressure antigen retrieval with 10 mM citrate buffer pH 6.0 before commencing with immunohistochemistry staining protocol.



Western blot analysis of various lysates, using KDM3A Rabbit polyclonal antibody (STJ113876) at 1:500 dilution. Secondary antibody: HRP Goat Anti-Rabbit IgG (H+L) (STJ5000856) at 1:10000 dilution. Lysates/proteins: 25 µg per lane. Blocking buffer: 3% nonfat dry milk in TBST. Detection: ECL Basic Kit. Exposure time: 90s.

This product is suitable for in-vitro studies under the RESEARCH USE ONLY [RUO] licence. This product must not be used as for diagnostic or other medical purposes.
St John's Laboratory Ltd, Knowledge Dock Business Centre, University Way, London, E16 2RD | Tel: 0208 223 3081