

Anti-mTOR antibody (2388-2487) (STJ113770)

STJ113770

GENERAL INFORMATION

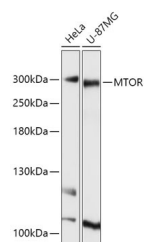
Product Type	Primary antibodies
Short Description	
Applications	WB/IHC-P/IF/ICC/ELISA
Host/Source	Rabbit
Reactivity	Human/Mouse/Rat

PRODUCT PROPERTIES

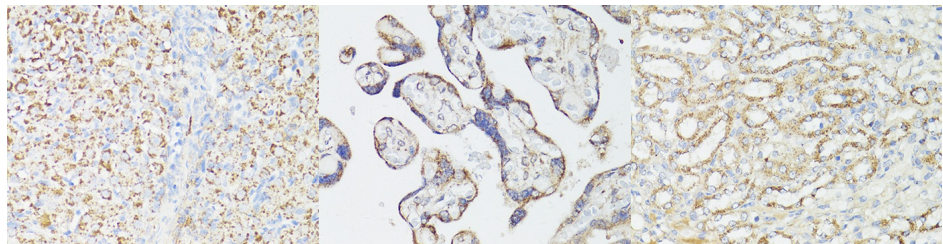
Clonality	Polyclonal
Clone ID	
Concentration	Lot specific
Conjugation	Unconjugated
Purification	Affinity purification
Dilution Range	WB:1:500-1:1000 IHC-P:1:50-1:200 IF/ICC:1:50-1:200 ELISA:Recommended starting concentration is 1 Mu g/mL. Please optimize the concentration based on your specific assay requirements.
Formulation	PBS with 0.05% Proclin300, 50% Glycerol, pH 7.3.
Isotype	IgG
Storage Instruction	Store at -20°C for up to 1 year from the date of receipt, and avoid repeat freeze-thaw cycles.

TARGET INFORMATION

Gene ID	2475
Gene Symbol	MTOR
Uniprot ID	MTOR_HUMAN
Immunogen	
Immunogen Region	2388-2487
Specificity	Recombinant fusion protein containing a sequence corresponding to amino acids 2388-2487 of human mTOR (NP_004949.1).
Immunogen Sequence	EVTGLDGNRYRITCHTVMEVL REHKDSVMVLEAFVYDPLL NWRLMDTNTKGKRSRTRTD SYSAGQSVEILDGVELGEPA HKKTGTTPESIHSGFDGL



Western blot analysis of extracts of various cell lines, using mTOR antibody (STJ113770) at 1:1000 dilution. Secondary antibody: HRP Goat Anti-rabbit IgG (H+L) at 1:10000 dilution. Lysates/proteins: 25ug per lane. Blocking buffer: 3% nonfat dry milk in TBST. Detection: ECL Basic Kit. Exposure time: 1s.



Immunohistochemistry of paraffin-embedded rat ovary using mTOR antibody (STJ113770) at dilution of 1:150 (40x lens).

Immunohistochemistry of paraffin-embedded human placenta using mTOR antibody (STJ113770) at dilution of 1:150 (40x lens).

Immunohistochemistry of paraffin-embedded mouse kidney using mTOR antibody (STJ113770) at dilution of 1:150 (40x lens).

This product is suitable for in-vitro studies under the RESEARCH USE ONLY [RUO] licence. This product must not be used as for diagnostic or other medical purposes.
St John's Laboratory Ltd, Knowledge Dock Business Centre, University Way, London, E16 2RD | Tel: 0208 223 3081