

Anti-MAP1LC3B antibody (1-125) (STJ113754)
STJ113754

GENERAL INFORMATION

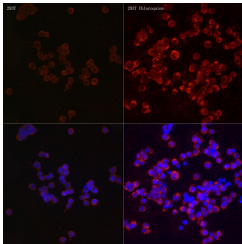
Product Type	Primary antibodies
Short Description	
Applications	WB/IHC-P/IF/ICC/ELISA
Host/Source	Rabbit
Reactivity	Human/Mouse/Rat

PRODUCT PROPERTIES

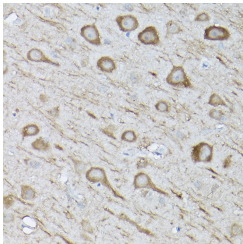
Clonality	Polyclonal
Clone ID	
Concentration	Lot specific
Conjugation	Unconjugated
Purification	Affinity purification
Dilution Range	WB:1:500-1:1000 IHC-P:1:50-1:200 IF/ICC:1:50-1:200 ELISA:Recommended starting concentration is 1 µg/mL. Please optimize the concentration based on your specific assay requirements.
Formulation	PBS with 0.02% Sodium Azide, 50% Glycerol, pH 7.3.
Isotype	IgG
Storage Instruction	Store at -20°C for up to 1 year from the date of receipt, and avoid repeat freeze-thaw cycles.

TARGET INFORMATION

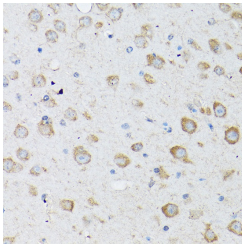
Gene ID	81631
Gene Symbol	MAP1LC3B
Uniprot ID	MPLP3B_HUMAN
Immunogen	
Immunogen Region	1-125
Specificity	Recombinant fusion protein containing a sequence corresponding to amino acids 1-100 of human LC3B (NP_073729.1).
Immunogen Sequence	MPSEKTFKQRRTFEQRVEDV RLIREQHPTKIPVIERYKG EKQLPVLDKTKFLVPDHVNM SELKIIRRLQLNANQAFF LLVNGHSMVSVSTPISEVYE



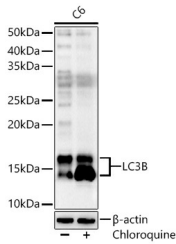
Immunofluorescence analysis of 293T and 293T Chloroquine cells using LC3B Rabbit polyclonal antibody (STJ113754) at dilution of 1:100 (40x lens). Secondary antibody: Cy3 Goat Anti-Rabbit IgG (H+L) at 1:500 dilution. Blue: DAPI for nuclear staining.



Immunohistochemistry analysis of LC3B in paraffin-embedded rat brain using LC3B Rabbit polyclonal antibody (STJ113754) at dilution of 1:100 (40x lens). Perform high pressure antigen retrieval with 10 mM citrate buffer pH 6.0 before commencing with immunohistochemistry staining protocol.



Immunohistochemistry analysis of LC3B in paraffin-embedded mouse brain using LC3B Rabbit polyclonal antibody (STJ113754) at dilution of 1:100 (40x lens). Perform high pressure antigen retrieval with 10 mM citrate buffer pH 6.0 before commencing with immunohistochemistry staining protocol.



Western blot analysis of lysates from C6 cells using LC3B Rabbit polyclonal antibody (STJ113754) at 1:1000 dilution. C6 cells were treated by Chloroquine (50 µM) at 37 °C for 20 hours. Secondary antibody: HRP Goat Anti-Rabbit IgG (H+L) (STJS000856) at 1:10000 dilution. Lysates/proteins: 25 µg per lane. Blocking buffer: 3% nonfat dry milk in TBST. Detection: ECL Basic Kit. Exposure time: 60s.

This product is suitable for in-vitro studies under the RESEARCH USE ONLY [RUO] licence. This product must not be used as for diagnostic or other medical purposes.
St John's Laboratory Ltd, Knowledge Dock Business Centre, University Way, London, E16 2RD | Tel: 0208 223 3081