

Anti-STAT3 antibody (600-700) (STJ113737)
STJ113737

GENERAL INFORMATION

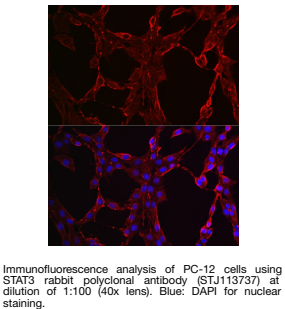
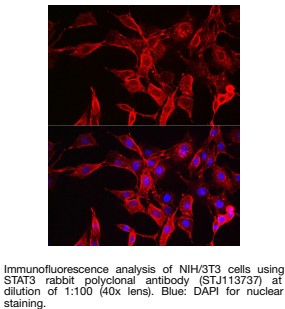
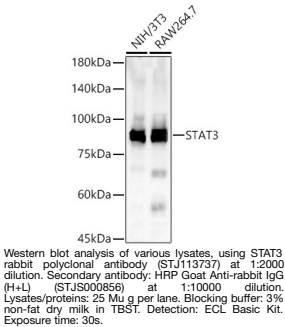
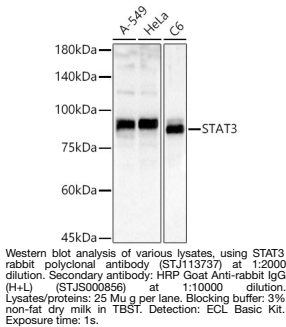
Product Type	Primary antibodies
Short Description	
Applications	WB/IF/ICC/ELISA
Host/Source	Rabbit
Reactivity	Human/Mouse/Rat

PRODUCT PROPERTIES

Clonality	Polyclonal
Clone ID	
Concentration	Lot specific
Conjugation	Unconjugated
Purification	Affinity purification
Dilution Range	WB:1:500-1:2000 IF/ICC:1:50-1:200 ELISA:Recommended starting concentration is 1 Mu g/mL. Please optimize the concentration based on your specific assay requirements.
Formulation	PBS with 0.05% Proclin300, 50% Glycerol, pH 7.3.
Isotype	IgG
Storage Instruction	Store at -20°C for up to 1 year from the date of receipt, and avoid repeat freeze-thaw cycles.

TARGET INFORMATION

Gene ID	6774
Gene Symbol	STAT3
Uniprot ID	STAT3_HUMAN
Immunogen	
Immunogen Region	600-700
Specificity	A synthetic peptide corresponding to a sequence within amino acids 600-700 of human STAT3 (NP_003141.2).
Immunogen Sequence	TKPPGTFLRRFESSKEGGV TFWVEKDISGKTQIQSVEP YTKQQLNNMSFAEIMGYKI MDATNILVSPPLYLYPDIPK EEAFGKYCRPESQEHPEADP G



This product is suitable for in-vitro studies under the RESEARCH USE ONLY [RUO] licence. This product must not be used as for diagnostic or other medical purposes.
St John's Laboratory Ltd, Knowledge Dock Business Centre, University Way, London, E16 2RD | Tel: 0208 223 3081