

Anti-POLR2A antibody (1-260) (STJ113726)
STJ113726

GENERAL INFORMATION

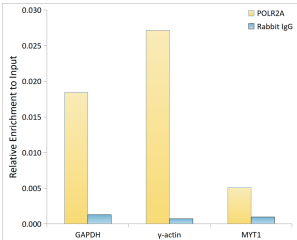
Product Type	Primary antibodies
Short Description	
Applications	WB/IHC-P/IF/ICC/ELISA/ChIP
Host/Source	Rabbit
Reactivity	Human/Mouse/Rat

PRODUCT PROPERTIES

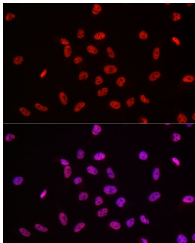
Clonality	Polyclonal
Clone ID	
Concentration	Lot specific
Conjugation	Unconjugated
Purification	Affinity purification
Dilution Range	WB:1:500-1:1000 IHC-P:1:50-1:200 IF/ICC:1:50-1:200
	ELISA:Recommended starting concentration is 1 Mu g/mL. Please optimize the concentration based on your specific assay requirements. ChIP:5 Mu g antibody for 10 Mu g-15 Mu g of Chromat
Formulation	PBS with 0.02% Sodium Azide, 50% Glycerol, pH 7.3.
Isotype	IgG
Storage Instruction	Store at-20°C for up to 1 year from the date of receipt, and avoid repeat freeze-thaw cycles.

TARGET INFORMATION

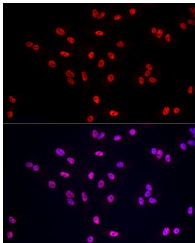
Gene ID	5430
Gene Symbol	POLR2A
Uniprot ID	RPB1_HUMAN
Immunogen	
Immunogen Region	1-260
Specificity	A synthetic peptide corresponding to a sequence within amino acids 1-260 of human POLR2A (NP_000928.1).
Immunogen Sequence	MHGGGPPSGDSACPLRTIKR VQFGVLPDELKRMSVTEGG IKYPETTEGGRPKLGLMDP RQGVIERGRCQTCAGNMTE CPGHFGHIELAKPVFHVGF L VKTMKVLRCVCFCKLLVD SNNPKIKDILAKSKGQPKKR LTHVYDLCKGNICEGGEEM DNKFGVEQPEGDEDLTKEKG HGGCGRYQPRIIRSGLLEYA EWKHNVEDSQEKKILLSPER VHEIFKRISDEECFVLGME



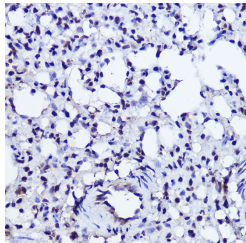
Chromatin immunoprecipitation analysis of extracts of HeLa cells, using POLR2A antibody (STJ113726) and rabbit IgG. The amount of immunoprecipitated DNA was checked by quantitative PCR. Histogram was constructed by the ratios of the immunoprecipitated DNA to the input.



Immunofluorescence analysis of HeLa cells using POLR2A Rabbit polyclonal antibody (STJ113726) at dilution of 1:100 (40x lens). Secondary antibody: Cy3 Goat Anti-Rabbit IgG (H+L) at 1:500 dilution. Blue: DAPI for nuclear staining.



Immunofluorescence analysis of A-549 cells using POLR2A Rabbit polyclonal antibody (STJ113726) at dilution of 1:100 (40x lens). Secondary antibody: Cy3 Goat Anti-Rabbit IgG (H+L) at 1:500 dilution. Blue: DAPI for nuclear staining.



Immunohistochemistry analysis of POLR2A in paraffin-embedded rat lung using POLR2A Rabbit polyclonal antibody (STJ113726) at dilution of 1:50 (40x lens). Perform high pressure antigen retrieval with 10 mM citrate buffer pH 6. 0. before commencing with immunohistochemistry staining protocol.

This product is suitable for in-vitro studies under the RESEARCH USE ONLY [RUO] licence. This product must not be used as for diagnostic or other medical purposes.
St John's Laboratory Ltd, Knowledge Dock Business Centre, University Way, London, E16 2RD | Tel: 0208 223 3081