

Anti-PIK3R1 antibody (240-724) (STJ113725)

STJ113725

GENERAL INFORMATION

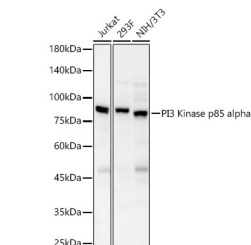
Product Type	Primary antibodies
Short Description	
Applications	WB/IHC-P/IF/ICC/ELISA
Host/Source	Rabbit
Reactivity	Human/Mouse/Rat

PRODUCT PROPERTIES

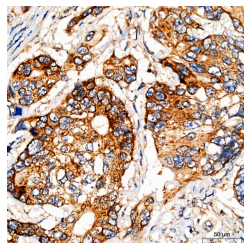
Clonality	Polyclonal
Clone ID	
Concentration	Lot specific
Conjugation	Unconjugated
Purification	Affinity purification
Dilution	WB:1:500-1:1000
Range	IHC-P:1:50-1:200 IF/ICC:1:50-1:200
	ELISA:Recommended starting concentration is 1 Mu g/mL. Please optimize the concentration based on your specific assay requirements.
Formulation	PBS with 0.09% Sodium Azide, 50% Glycerol, pH 7.3.
Isotype	IgG
Storage	Store at -20°C for up to 1 year from the date of receipt, and avoid repeat freeze-thaw cycles.
Instruction	

TARGET INFORMATION

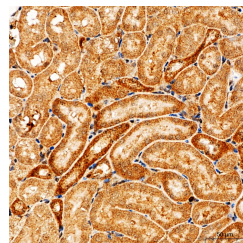
Gene ID	5295
Gene Symbol	PIK3R1
Uniprot ID	P85A_HUMAN
Immunogen	240-724
Region	
Specificity	Recombinant fusion protein containing a sequence corresponding to amino acids 240-380 of human PI3 Kinase p85 alpha (NP_852664.1).
Immunogen Sequence	LQYLLKHFFKLSQTSSKNLL NARVLSEIFSPMLFRFSAAS SDNTENLIKVIELISTEWN ERQPAPALPPKPPKPTTVAN NGMNNMMSLQDAEWYWGDIS REEVNEKLRDTADGTFLVRD ASTKMHGDTYTLRLKGGNNK L



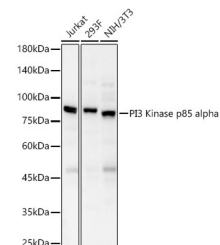
Western blot analysis of various lysates using PI3 Kinase p85 alpha Rabbit pAb (STJ113725) at 1:1000 dilution.
Secondary antibody: HRP-conjugated Goat anti-Rabbit IgG (H+L) (STJS000856) at 1:10000 dilution.
Lysates/proteins: 25 Mu g per lane.
Blocking buffer: 3% nonfat dry milk in TBST.
Detection: ECL Basic Kit
Exposure time: 10s.



Western blot analysis of various lysates, using PI3 Kinase p85 alpha Rabbit pAb (STJ113725) at 1:1000 dilution.
Secondary antibody: HRP-conjugated Goat anti-Rabbit IgG (H+L) (STJS000856) at 1:10000 dilution.
Lysates/proteins: 25 Mu g per lane.
Blocking buffer: 3% nonfat dry milk in TBST.
Detection: ECL Basic Kit
Exposure time: 30s.



Western blot analysis of various lysates, using PI3 Kinase p85 alpha Rabbit pAb (STJ113725) at 1:1000 dilution.
Secondary antibody: HRP-conjugated Goat anti-Rabbit IgG (H+L) (STJS000856) at 1:10000 dilution.
Lysates/proteins: 25 Mu g per lane.
Blocking buffer: 3% nonfat dry milk in TBST.
Detection: ECL Basic Kit
Exposure time: 180s.



Western blot analysis of various lysates, using PI3 Kinase p85 alpha Rabbit pAb (STJ113725) at 1:1000 dilution.
Secondary antibody: HRP-conjugated Goat anti-Rabbit IgG (H+L) (STJS000856) at 1:10000 dilution.
Lysates/proteins: 25 Mu g per lane.
Blocking buffer: 3% nonfat dry milk in TBST.
Detection: ECL Basic Kit
Exposure time: 30s.

This product is suitable for in-vitro studies under the RESEARCH USE ONLY [RUO] licence. This product must not be used as for diagnostic or other medical purposes.

St John's Laboratory Ltd, Knowledge Dock Business Centre, University Way, London, E16 2RD | Tel: 0208 223 3081