

Anti-NFE2L2 antibody (366-605) (STJ113718)

STJ113718

GENERAL INFORMATION

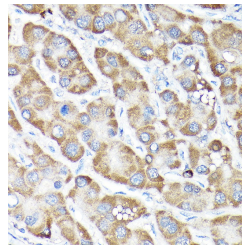
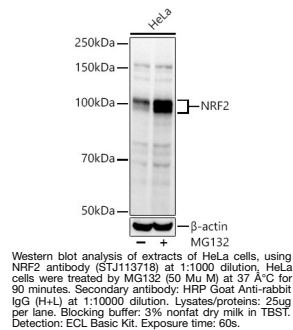
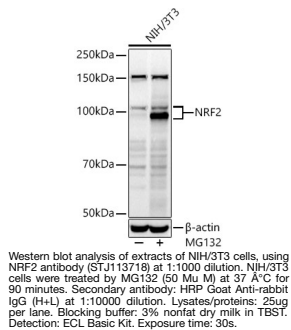
Product Type	Primary antibodies
Short Description	
Applications	WB/IHC-P/IF/ICC/ELISA
Host/Source	Rabbit
Reactivity	Human/Mouse/Rat

PRODUCT PROPERTIES

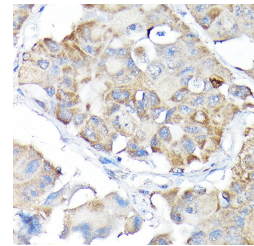
Clonality	Polyclonal
Clone ID	
Concentration	Lot specific
Conjugation	Unconjugated
Purification	Affinity purification
Dilution	WB:1:500-1:1000
Range	IHC-P:1:50-1:200 IF/ICC:1:50-1:200 ELISA:Recommended starting concentration is 1 Mu g/mL. Please optimize the concentration based on your specific assay requirements.
Formulation	PBS with 0.02% Sodium Azide, 50% Glycerol, pH 7.3.
Isotype	IgG
Storage	Store at -20°C for up to 1 year from the date of receipt, and avoid repeat freeze-thaw cycles.
Instruction	

TARGET INFORMATION

Gene ID	4780
Gene Symbol	NFE2L2
Uniprot ID	NF2L2_HUMAN
Immunogen	
Immunogen Region	366-605
Specificity	A synthetic peptide corresponding to a sequence within amino acids 366-605 of human NRF2 (NP_006155.2).
Immunogen Sequence	YGD TL LGLSDSEVEELDSAP GSVKQNGPKTPVHSSGDMVQ PLSPSQGGSTHVHDAQCENT PEKELPVSPGHRKTPFTKDK ELSSRLEAHLTRDELRAKALH IPFPVEKIINLPVDFNEMM SKEQFNEAQLALIRD IRRRG KNKVAQNCRRKRKLENIVEL EQDLDHLKDEKEKLLKEKGE NDKSLHLKLLKQLSTLYLEVF SMLRDEDGKPYSPSEYSLQQ TRDGNVFLVPKSKKPDVKK



Immunohistochemistry of paraffin-embedded human liver cancer using NRF2 rabbit polyclonal antibody (STJ113718) at dilution of 1:200 (40x lens). Perform high pressure antigen retrieval with 10 mM citrate buffer pH 6. 0 before commencing with immunohistochemistry staining protocol.



Immunohistochemistry of paraffin-embedded human lung cancer using NRF2 rabbit polyclonal antibody (STJ113718) at dilution of 1:200 (40x lens). Perform high pressure antigen retrieval with 10 mM citrate buffer pH 6. 0 before commencing with immunohistochemistry staining protocol.

This product is suitable for in-vitro studies under the RESEARCH USE ONLY [RUO] licence. This product must not be used as for diagnostic or other medical purposes.
St John's Laboratory Ltd, Knowledge Dock Business Centre, University Way, London, E16 2RD | Tel: 0208 223 3081