

Anti-CTGF antibody (100-200) (STJ113698)

STJ113698

GENERAL INFORMATION

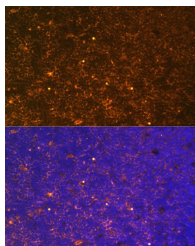
Product Type	Primary antibodies
Short Description	
Applications	WB/IF/ICC/ELISA
Host/Source	Rabbit
Reactivity	Human/Rat

PRODUCT PROPERTIES

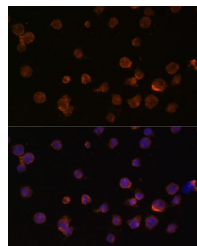
Clonality	Polyclonal
Clone ID	
Concentration	Lot specific
Conjugation	Unconjugated
Purification	Affinity purification
Dilution Range	WB:1:500-1:10000 IF/ICC:1:20-1:100 ELISA:Recommended starting concentration is 1 μ g/mL. Please optimize the concentration based on your specific assay requirements.
Formulation	PBS with 0.05% Proclin300, 50% Glycerol, pH 7.3.
Isotype	IgG
Storage	Store at -20°C for up to 1 year from the date of receipt, and avoid repeat freeze-thaw cycles.
Instruction	

TARGET INFORMATION

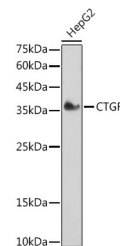
Gene ID	1490
Gene Symbol	CCN2
Uniprot ID	CCN2_HUMAN
Immunogen	
Immunogen Region	100-200
Specificity	A synthetic peptide corresponding to a sequence within amino acids 100-200 of human CTGF (NP_001892.2).
Immunogen Sequence	GAPCIFGGTVYRSGESFQSS CKYQCTCLDGAVGCMPLCSM DVRLPSPDCPFPRVKLPKG CCEEWVCDEPKDQTVWGPAL AAYRLEDTFGPDPTMIRANC L



Immunofluorescence analysis of Rat thymus using CTGF antibody (STJ113698) at dilution of 1:100. Blue: DAPI for nuclear staining.



Immunofluorescence analysis of THP-1 cells using CTGF antibody (STJ113698) at dilution of 1:100. Blue: DAPI for nuclear staining.



Western blot analysis of extracts of HepG2 cells, using CTGF antibody (STJ113698) at 1:1000 dilution. Secondary antibody: HRP Goat Anti-Rabbit IgG (H+L) (STJS000856) at 1:10000 dilution. Lysates/proteins: 25 μ g per lane. Blocking buffer: 3% nonfat dry milk in TBST. Detection: ECL Basic Kit. Exposure time: 180s.