

Anti-AFP antibody (450-550) (STJ113691)

STJ113691

GENERAL INFORMATION

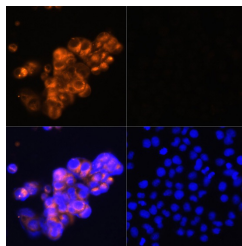
Product Type	Primary antibodies
Short Description	
Applications	WB/IF/ICC/ELISA
Host/Source	Rabbit
Reactivity	Human/Mouse

PRODUCT PROPERTIES

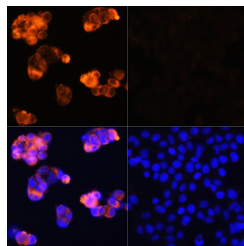
Clonality	Polyclonal
Clone ID	
Concentration	Lot specific
Conjugation	Unconjugated
Purification	Affinity purification
Dilution Range	WB:1:500-1:2000 IF/ICC:1:50-1:200 ELISA:Recommended starting concentration is 1 Mu g/mL. Please optimize the concentration based on your specific assay requirements.
Formulation	PBS with 0.01% Thimerosal, 50% Glycerol, pH 7.3.
Isotype	IgG
Storage	Store at -20°C for up to 1 year from the date of receipt, and avoid repeat freeze-thaw cycles.
Instruction	

TARGET INFORMATION

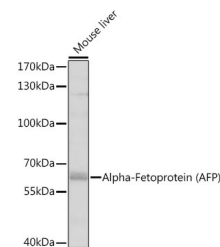
Gene ID	174
Gene Symbol	AFP
Uniprot ID	FETA_HUMAN
Immunogen	
Immunogen Region	450-550
Specificity	Recombinant fusion protein containing a sequence corresponding to amino acids 450-550 of Alpha-Fetoprotein (AFP) (NP_001125.1).
Immunogen Sequence	ITRKMAATAATCCQLSEDKL LACGEGAADIIGHLCIRHE MTPVNPVGVCQCTSSYANRR PCFSSLVDETYVPPAFSDD KFIHFKDLCQAQGVALTQTMK Q



Immunofluorescence analysis of HepG2 cells (upper left) and LO2 cells (negative sample control) (upper right) using Alpha-Fetoprotein (AFP) antibody (STJ113691) at dilution of 1:100. Blue: DAPI for nuclear staining.



Immunofluorescence analysis of HepG2 cells (upper left) and LO2 cells (negative sample control) (upper right) using Alpha-Fetoprotein (AFP) antibody (STJ113691) at dilution of 1:100. Blue: DAPI for nuclear staining.



Western blot analysis of extracts of mouse liver, using Alpha-Fetoprotein (AFP) antibody (STJ113691) at 1:1000 dilution. Secondary antibody: HRP Goat Anti-Rabbit IgG (H+L) (STJ5000856) at 1:10000 dilution. Lysates/proteins: 25 Mu g per lane. Blocking buffer: 3% nonfat dry milk in TBST. Detection: ECL Enhanced Kit. Exposure time: 60s.