

# Anti-RPSA antibody (1-295) (STJ113608)

STJ113608

## GENERAL INFORMATION

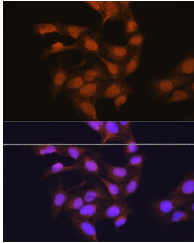
<b>Product Type</b>	Primary antibodies
<b>Short Description</b>	
<b>Applications</b>	WB/IF/ICC/ELISA
<b>Host/Source</b>	Rabbit
<b>Reactivity</b>	Human/Mouse/Rat

## PRODUCT PROPERTIES

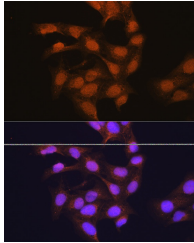
<b>Clonality</b>	Polyclonal
<b>Clone ID</b>	
<b>Concentration</b>	Lot specific
<b>Conjugation</b>	Unconjugated
<b>Purification</b>	Affinity purification
<b>Dilution</b>	WB:1:1000-1:5000
<b>Range</b>	IF/ICC:1:50-1:200
	ELISA:Recommended starting concentration is 1 Mu g/mL. Please optimize the concentration based on your specific assay requirements.
<b>Formulation</b>	PBS with 0.01% Thimerosal, 50% Glycerol, pH 7.3.
<b>Isotype</b>	IgG
<b>Storage Instruction</b>	Store at -20°C for up to 1 year from the date of receipt, and avoid repeat freeze-thaw cycles.

## TARGET INFORMATION

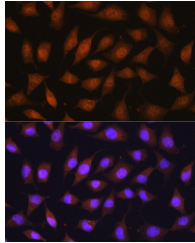
<b>Gene ID</b>	3921
<b>Gene Symbol</b>	RPSA
<b>Uniprot ID</b>	RSSA_HUMAN
<b>Immunogen</b>	
<b>Immunogen Region</b>	1-295
<b>Specificity</b>	Recombinant fusion protein containing a sequence corresponding to amino acids 1-295 of human 67kDa Laminin Receptor (NP_002286.2).
<b>Immunogen Sequence</b>	MSGALDVLQMKEEDVLKFLA AGTHLGGTNLDQMEQYIYK RKSDGIYIINLKRTWEKLLL AARAIVAIENPADVSVISSR NTGQRAVLKFAAATGATPIA GRFTPGTFTNQIAAFREPR LLWTDPRADHQPLTEASYV NLPTIALCNTDSPLRYVDIA IPCNNKGAHSVGLMWWMLAR EVLRMRGTISREHPWEVMPD LYFYRDPREEKEEQAAAEK AVTKEEFQGEWTAPAPEFT



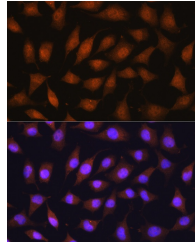
Western blot analysis of extracts of various cell lines, using 67kDa Laminin Receptor antibody (STJ113608) at 1:3000 dilution. Secondary antibody: HRP Goat Anti-rabbit IgG (H+L) at 1:10000 dilution. Lysates/proteins: 25ug per lane. Blocking buffer: 3% non-fat dry milk in TBST. Detection: ECL Basic Kit. Exposure time: 90s.



Immunofluorescence analysis of U-2 OS cells using 67kDa Laminin Receptor Rabbit polyclonal antibody (STJ113608) at dilution of 1:100 (40x lens). Secondary antibody: Cy3 Goat Anti-Rabbit IgG (H+L) at 1:500 dilution. Blue: DAPI for nuclear staining.



Western blot analysis of extracts of various cell lines, using 67kDa Laminin Receptor antibody (STJ113608) at 1:3000 dilution. Secondary antibody: HRP Goat Anti-rabbit IgG (H+L) at 1:10000 dilution. Lysates/proteins: 25ug per lane. Blocking buffer: 3% non-fat dry milk in TBST. Detection: ECL Enhanced Kit. Exposure time: 90s.



Immunofluorescence analysis of L929 cells using 67kDa Laminin Receptor Rabbit polyclonal antibody (STJ113608) at dilution of 1:100 (40x lens). Secondary antibody: Cy3 Goat Anti-Rabbit IgG (H+L) at 1:500 dilution. Blue: DAPI for nuclear staining.

This product is suitable for in-vitro studies under the RESEARCH USE ONLY [RUO] licence. This product must not be used as for diagnostic or other medical purposes.  
St John's Laboratory Ltd, Knowledge Dock Business Centre, University Way, London, E16 2RD | Tel: 0208 223 3081