

Anti-EIF3J antibody (1-258) (STJ113577)

STJ113577

GENERAL INFORMATION

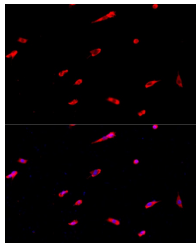
Product Type	Primary antibodies
Short Description	
Applications	WB/IF/ICC/ELISA
Host/Source	Rabbit
Reactivity	Human/Mouse/Rat

PRODUCT PROPERTIES

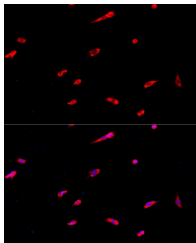
Clonality	Polyclonal
Clone ID	
Concentration	Lot specific
Conjugation	Unconjugated
Purification	Affinity purification
Dilution	WB:1:200-1:2000
Range	IF/CC:1:50-1:200 ELISA:Recommended starting concentration is 1 Mu g/mL. Please optimize the concentration based on your specific assay requirements.
Formulation	PBS with 0.01% Thimerosal, 50% Glycerol, pH 7.3.
Isotype	IgG
Storage Instruction	Store at -20°C for up to 1 year from the date of receipt, and avoid repeat freeze-thaw cycles.

TARGET INFORMATION

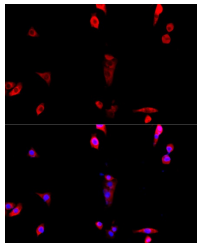
Gene ID	8669
Gene Symbol	EIF3J
Uniprot ID	EIF3J_HUMAN
Immunogen	
Immunogen Region	1-258
Specificity	Recombinant fusion protein containing a sequence corresponding to amino acids 1-258 of human EIF3J (NP_003749.2).
Immunogen Sequence	MAAAAAAGDSWDADAFS VEDPVKVGGGGTAGGDRWE GEDEDEDVKNWDDDDDEKK EEAEVKPEVKISEKKKIAEK IKEKERQQKKRQEEIKRLE EPEEPKVLTPEEQLADKLRL KKLQEESDLELAKETFGVNN AVYGIDAMNPSSRDDTFEG KLLKDKITQYEKSLYYASF EVLVRDVCISLEIDDLKIT NSLTVLCSEKQKQEKQSKAK KKKKGWPGGGLKATMKDD



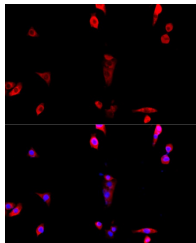
Western blot analysis of extracts of various cell lines, using EIF3J antibody (STJ113577) at 1:3000 dilution. Secondary antibody: HRP Goat Anti-rabbit IgG (H+L) at 1:10000 dilution. Lysates/proteins: 25ug per lane. Blocking buffer: 3% non-fat dry milk in TBST. Detection: ECL Basic Kit. Exposure time: 10s.



Immunofluorescence analysis of PC-12 cells using EIF3J Rabbit polyclonal antibody (STJ113577) at dilution of 1:100. Secondary antibody: Cy3 Goat Anti-Rabbit IgG (H+L) at 1:500 dilution. Blue: DAPI for nuclear staining.



Immunofluorescence analysis of HeLa cells using EIF3J antibody (STJ113577) at dilution of 1:100. Secondary antibody: Cy3 Goat Anti-Rabbit IgG (H+L) at 1:500 dilution. Blue: DAPI for nuclear staining.



Immunofluorescence analysis of NIH/3T3 cells using EIF3J Rabbit polyclonal antibody (STJ113577) at dilution of 1:100. Secondary antibody: Cy3 Goat Anti-Rabbit IgG (H+L) at 1:500 dilution. Blue: DAPI for nuclear staining.

This product is suitable for in-vitro studies under the RESEARCH USE ONLY [RUO] licence. This product must not be used as for diagnostic or other medical purposes.
St John's Laboratory Ltd, Knowledge Dock Business Centre, University Way, London, E16 2RD | Tel: 0208 223 3081