

Anti-DDX50 antibody (1-135) (STJ113576)

STJ113576

GENERAL INFORMATION

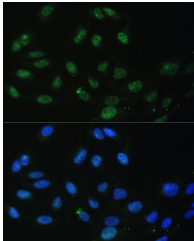
Product Type	Primary antibodies
Short Description	
Applications	WB/IHC-P/IF/ICC/ELISA
Host/Source	Rabbit
Reactivity	Human/Mouse/Rat

PRODUCT PROPERTIES

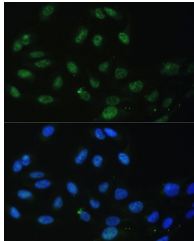
Clonality	Polyclonal
Clone ID	
Concentration	Lot specific
Conjugation	Unconjugated
Purification	Affinity purification
Dilution	WB:1:200-1:2000
Range	IHC-P:1:50-1:200 IF/ICC:1:50-1:200 ELISA:Recommended starting concentration is 1 μ g/mL. Please optimize the concentration based on your specific assay requirements.
Formulation	PBS with 0.01% Thimerosal, 50% Glycerol, pH 7.3.
Isotype	IgG
Storage	Store at -20°C for up to 1 year from the date of receipt, and avoid repeat freeze-thaw cycles.
Instruction	

TARGET INFORMATION

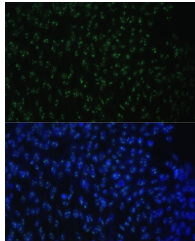
Gene ID	79009
Gene Symbol	DDX50
Uniprot ID	DDX50_HUMAN
Immunogen	
Region	1-135
Specificity	Recombinant fusion protein containing a sequence corresponding to amino acids 1-135 of human DDX50 (NP_076950.1).
Immunogen Sequence	MPGKLLWGDIMELEAPLEES ESQKKERQKSDRRKSRHHYD SDEKSETRENGVTDDLDPK AKKSKMKEKLNGDTEEGFNR LSDEFSKSHKSRKDLPNGD IDEYEKKSKRVSSLDSTHK SSDNKLEETLTREQK



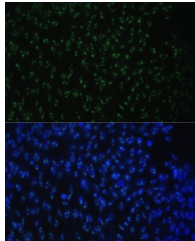
Western blot analysis of extracts of various cell lines, using DDX50 antibody (STJ113576) at 1:3000 dilution. Secondary antibody: HRP Goat Anti-rabbit IgG (H+L) at 1:10000 dilution. Lysates/proteins: 25 μ g per lane. Blocking buffer: 3% non-fat dry milk in TBST. Detection: ECL Basic Kit. Exposure time: 90s.



Immunofluorescence analysis of U-2 OS cells using DDX50 Rabbit polyclonal antibody (STJ113576) at dilution of 1:100. Secondary antibody: Cy3 Goat Anti-Rabbit IgG (H+L) at 1:500 dilution. Blue: DAPI for nuclear staining.



Immunohistochemistry of paraffin-embedded mouse testis using DDX50 antibody (STJ113576) at dilution of 1:100 (40x lens).



Immunofluorescence analysis of NIH-3T3 cells using DDX50 Rabbit polyclonal antibody (STJ113576) at dilution of 1:100. Secondary antibody: Cy3 Goat Anti-Rabbit IgG (H+L) at 1:500 dilution. Blue: DAPI for nuclear staining.

This product is suitable for in-vitro studies under the RESEARCH USE ONLY [RUO] licence. This product must not be used as for diagnostic or other medical purposes.
St John's Laboratory Ltd, Knowledge Dock Business Centre, University Way, London, E16 2RD | Tel: 0208 223 3081