

Anti-SPAG6 antibody (180-290) (STJ113564)

STJ113564

GENERAL INFORMATION

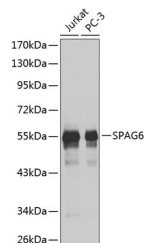
Product Type	Primary antibodies
Short Description	
Applications	WB/ELISA
Host/Source	Rabbit
Reactivity	Human

PRODUCT PROPERTIES

Clonality	Polyclonal
Clone ID	
Concentration	Lot specific
Conjugation	Unconjugated
Purification	Affinity purification
Dilution Range	WB:1:500-1:1000 ELISA:Recommended starting concentration is 1 Mu g/mL. Please optimize the concentration based on your specific assay requirements.
Formulation	PBS with 0.01% Thimerosal, 50% Glycerol, pH 7.3.
Isotype	IgG
Storage	Store at -20°C for up to 1 year from the date of receipt, and avoid repeat freeze-thaw cycles.
Instruction	

TARGET INFORMATION

Gene ID	9576
Gene Symbol	SPAG6
Uniprot ID	SPAG6_HUMAN
Immunogen	
Region	180-290
Specificity	Recombinant fusion protein containing a sequence corresponding to amino acids 180-290 of human SPAG6 (NP_758442.1).
Immunogen Sequence	EIALKRIAASALSADI AKHSP ELAQTVVDAGAVAH LAQMIL NPDAKLKHQILSALSQVSKH SVDLAEMVVEAEIFPVVLTCLKDKDEYVKKNASTLIREIA KHTPELSQLVV



Western blot analysis of various lysates using SPAG6 Rabbit polyclonal antibody (STJ113564). Secondary antibody: HRP Goat Anti-Rabbit IgG (H+L) (STJ5000856) at 1:10000 dilution. Lysates/proteins: 25 Mu g per lane. Blocking buffer: 3% nonfat dry milk in TBST.

This product is suitable for in-vitro studies under the RESEARCH USE ONLY [RUO] licence. This product must not be used as for diagnostic or other medical purposes.
St John's Laboratory Ltd, Knowledge Dock Business Centre, University Way, London, E16 2RD | Tel: 0208 223 3081