

Anti-ErbB2 antibody (1156-1255) (STJ113560)

STJ113560

GENERAL INFORMATION

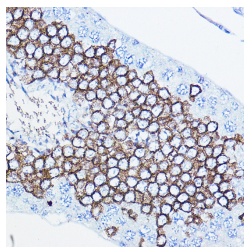
Product Type	Primary antibodies
Short Description	
Applications	WB/IHC-P/ELISA
Host/Source	Rabbit
Reactivity	Human/Mouse/Rat

PRODUCT PROPERTIES

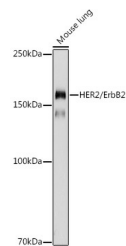
Clonality	Polyclonal
Clone ID	
Concentration	Lot specific
Conjugation	Unconjugated
Purification	Affinity purification
Dilution	WB:1:500-1:1000
Range	IHC-P:1:50-1:200
	ELISA:Recommended starting concentration is 1 Mu g/mL. Please optimize the concentration based on your specific assay requirements.
Formulation	PBS with 0.02% Sodium Azide, 50% Glycerol, pH 7.3.
Isotype	IgG
Storage Instruction	Store at -20°C for up to 1 year from the date of receipt, and avoid repeat freeze-thaw cycles.

TARGET INFORMATION

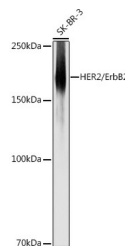
Gene ID	2064
Gene Symbol	ERBB2
Uniprot ID	ERBB2_HUMAN
Immunogen	
Immunogen Region	1156-1255
Specificity	A synthetic peptide corresponding to a sequence within amino acids 1156-1255 of human HER2/ErbB2 (NP_004439.2).
Immunogen Sequence	PTVPLPSETDGYVAPLTCSQ PPEYVNPQDVRPQPPSPREG PLPAARPAGATLERPKTLSP GKNGVVKDVFVFGGAVENPE YLTQGGGAAPQPHPPAFSP AFDNLYYWDQDPPERGAPPS TFKGTPTAENPEYGLDVPV



Immunohistochemistry analysis of HER2/ErbB2 in paraffin-embedded rat testis using HER2/ErbB2 Rabbit polyclonal antibody (STJ113560) at dilution of 1:100 (40x lens). Perform high pressure antigen retrieval with 10 mM citrate buffer pH 6.0 before commencing with immunohistochemistry staining protocol.



Western blot analysis of lysates from Mouse lung, using HER2/ErbB2 Rabbit polyclonal antibody (STJ113560) at 1:500 dilution. Secondary antibody: HRP Goat Anti-Rabbit IgG (H+L) (STJS000856) at 1:10000 dilution. Lysates/proteins: 25 Mu g per lane. Blocking buffer: 3% nonfat dry milk in TBST. Detection: ECL Basic Kit. Exposure time: 180s.



Western blot analysis of lysates from SK-BR-3 cells, using HER2/ErbB2 Rabbit polyclonal antibody (STJ113560) at 1:500 dilution. Secondary antibody: HRP Goat Anti-Rabbit IgG (H+L) (STJS000856) at 1:10000 dilution. Lysates/proteins: 25 Mu g per lane. Blocking buffer: 3% nonfat dry milk in TBST. Detection: ECL Basic Kit. Exposure time: 1s.

This product is suitable for in-vitro studies under the RESEARCH USE ONLY [RUO] licence. This product must not be used as for diagnostic or other medical purposes.
St John's Laboratory Ltd, Knowledge Dock Business Centre, University Way, London, E16 2RD | Tel: 0208 223 3081