

Anti-Phospho-RPS6KB1-T389 antibody (STJ113500)
STJ113500

GENERAL INFORMATION

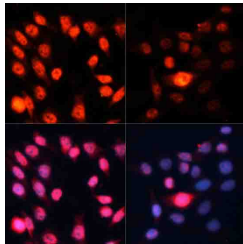
Product Type	Primary antibodies
Short Description	
Applications	WB/IF/ICC/ELISA
Host/Source	Rabbit
Reactivity	Human/Mouse/Rat

PRODUCT PROPERTIES

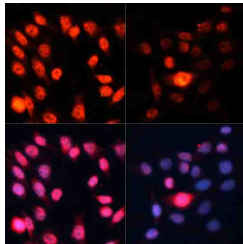
Clonality	Polyclonal
Clone ID	
Concentration	Lot specific
Conjugation	Unconjugated
Purification	Affinity purification
Dilution Range	WB:1:500-1:1000 IF/ICC:1:50-1:200 ELISA:Recommended starting concentration is 1 µg/mL. Please optimize the concentration based on your specific assay requirements.
Formulation	PBS with 0.02% Sodium Azide, 50% Glycerol, pH 7.3.
Isotype	IgG
Storage Instruction	Store at -20°C for up to 1 year from the date of receipt, and avoid repeat freeze-thaw cycles.

TARGET INFORMATION

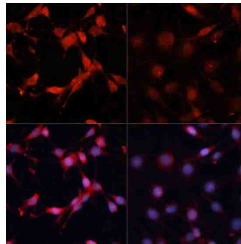
Gene ID	6198
Gene Symbol	RPS6KB1
Uniprot ID	KS6B1_HUMAN
Immunogen	GFTYVA
Immunogen Region	
Specificity	A synthetic phosphorylated peptide around T389 of human P70 S6K (NP_003152.1).
Immunogen Sequence	GFTYVA



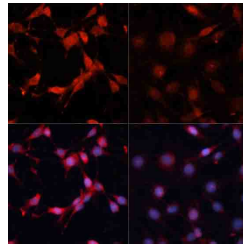
Western blot analysis of extracts of various cell lines, using Phospho-p70 S6 Kinase 1-T389 antibody (STJ113500) at 1:1000 dilution. HeLa cells and NIH/3T3 cells were treated by Serum-starvation overnight at 37 °C. NIH/3T3 cells were treated by oligomycin (0.5 µM) at 37 °C for 30 minutes. Secondary antibody: HRP Goat Anti-rabbit IgG (H+L) at 1:10000 dilution. Lysates/proteins: 25µg per lane. Blocking buffer: 3% non-fat dry milk in TBST. Detection: ECL Basic Kit. Exposure time: 10s.



Immunofluorescence analysis of HeLa cells using Phospho-p70 S6 Kinase 1-T389 Rabbit polyclonal antibody (STJ113500) at dilution of 1:100. HeLa cells were treated by Serum-starvation overnight at 37 °C.



Western blot analysis of extracts of various cell lines, using Phospho-p70 S6 Kinase 1-T389 antibody (STJ113500) at 1:1000 dilution. PC-12 cells were treated by 10% FBS at 37 °C for 30 minutes after serum-starvation overnight. Secondary antibody: HRP Goat Anti-rabbit IgG (H+L) at 1:10000 dilution. Lysates/proteins: 25µg per lane. Blocking buffer: 3% non-fat dry milk in TBST. Detection: ECL Basic Kit. Exposure time: 90s.



Immunofluorescence analysis of C6 cells using Phospho-p70 S6 Kinase 1-T389 Rabbit polyclonal antibody (STJ113500) at dilution of 1:100. C6 cells were treated by Serum-starvation overnight at 37 °C.

This product is suitable for in-vitro studies under the RESEARCH USE ONLY [RUO] licence. This product must not be used as for diagnostic or other medical purposes.
St John's Laboratory Ltd, Knowledge Dock Business Centre, University Way, London, E16 2RD | Tel: 0208 223 3081