

Anti-Phospho-RPS6KA1-S380 antibody (STJ113499)

STJ113499

GENERAL INFORMATION

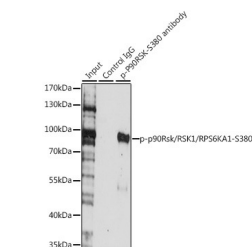
Product Type	Primary antibodies
Short Description	
Applications	WB/IP/ELISA
Host/Source	Rabbit
Reactivity	Human/Mouse/Rat

PRODUCT PROPERTIES

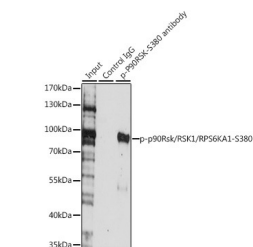
Clonality	Polyclonal
Clone ID	
Concentration	Lot specific
Conjugation	Unconjugated
Purification	Affinity purification
Dilution Range	WB:1:500-1:2000 IP:0.5 Mu g-4 Mu g antibody for 200 Mu g-400 Mu g extracts of whole cells ELISA:Recommended starting concentration is 1 Mu g/mL. Please optimize the concentration based on your specific assay requirements.
Formulation	PBS with 0.02% Sodium Azide, 50% Glycerol, pH 7.3.
Isotype	IgG
Storage Instruction	Store at -20°C for up to 1 year from the date of receipt, and avoid repeat freeze-thaw cycles.

TARGET INFORMATION

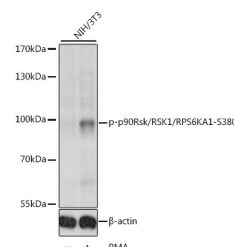
Gene ID	6195
Gene Symbol	RPS6KA1
Uniprot ID	KS6A1_HUMAN
Immunogen	GFSFV
Immunogen Region	
Specificity	A synthetic phosphorylated peptide around S380 of human p90Rsk/RSK1/RPS6KA1 (NP_002944.2).
Immunogen Sequence	GFSFV



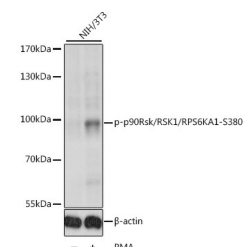
Western blot analysis of extracts of various cell lines, using Phospho-P90RSK-S380 antibody (STJ113499) at 1:1000 dilution or RPS6KA1 antibody (A15718). HeLa cells were treated by PMA/TPA (200 nM) at 37 °C for 15 minutes after serum-starvation overnight. Secondary antibody: HRP Goat Anti-rabbit IgG (H+L) at 1:10000 dilution. Lysates/proteins: 25ug per lane. Blocking buffer: 3% BSA. Detection: ECL Basic Kit. Exposure time: 1s.



Immunoprecipitation analysis of 200 Mu g extracts of HeLa cells, using 3 Mu g Phospho-p90Rsk/RSK1/RPS6KA1-S380 polyclonal antibody (STJ113499). Western blot was performed from the immunoprecipitate using Phospho-p90Rsk/RSK1/RPS6KA1-S380 polyclonal antibody (STJ113499) at a dilution of 1:1000. HeLa cells were treated by EGF (100 ng/mL) at 37 °C for 30 minutes after serum-starvation overnight.



Western blot analysis of extracts of various cell lines, using Phospho-P90RSK-S380 antibody (STJ113499) at 1:1000 dilution. NIH/3T3 cells were treated by PMA/TPA (200 nM) at 37 °C for 30 minutes after serum-starvation overnight. Secondary antibody: HRP Goat Anti-rabbit IgG (H+L) at 1:10000 dilution. Lysates/proteins: 25ug per lane. Blocking buffer: 3% BSA. Detection: ECL Basic Kit. Exposure time: 1s.



Western blot analysis of various lysates using Phospho-p90Rsk/RSK1/RPS6KA1-S380 Rabbit polyclonal antibody (STJ113499) at 1:1000 dilution. NIH/3T3 cells were treated by PMA/TPA (200 nM) at 37 °C for 30 minutes after serum-starvation overnight. Secondary antibody: HRP Goat Anti-Rabbit IgG (H+L) (STJ5000856) at 1:10000 dilution. Lysates/proteins: 25 Mu g per lane. Blocking buffer: 3% BSA. Detection: ECL Basic Kit. Exposure time: 1s.

This product is suitable for in-vitro studies under the RESEARCH USE ONLY [RUO] licence. This product must not be used as for diagnostic or other medical purposes.
St John's Laboratory Ltd, Knowledge Dock Business Centre, University Way, London, E16 2RD | Tel: 0208 223 3081