

Anti-Phospho-RPS6-S240/244 antibody (STJ113488)

STJ113488

GENERAL INFORMATION

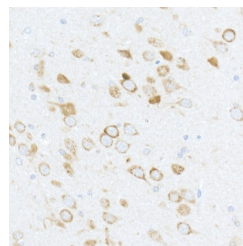
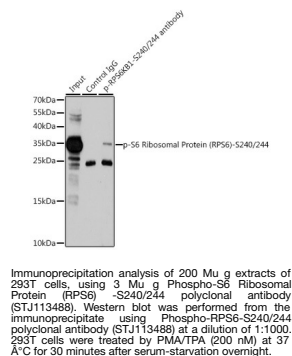
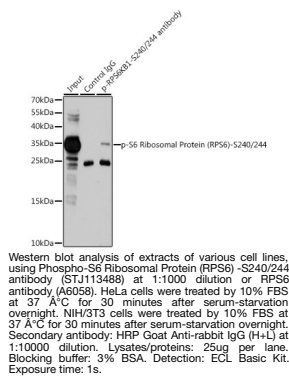
Product Type	Primary antibodies
Short Description	
Applications	WB/IHC-P/IP/ELISA
Host/Source	Rabbit
Reactivity	Human/Mouse/Rat

PRODUCT PROPERTIES

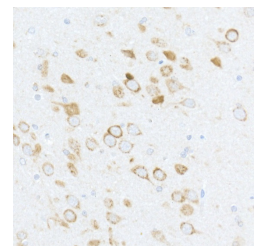
Clonality	Polyclonal
Clone ID	
Concentration	Lot specific
Conjugation	Unconjugated
Purification	Affinity purification
Dilution Range	WB:1:500-1:2000 IHC-P:1:50-1:200 IP:0.5 Mu g-4 Mu g antibody for 200 Mu g-400 Mu g extracts of whole cells ELISA:Recommended starting concentration is 1 Mu g/mL. Please optimize the concentration based on your specific assay requirements.
Formulation	PBS with 0.02% Sodium Azide, 50% Glycerol, pH 7.3.
Isotype	IgG
Storage Instruction	Store at -20°C for up to 1 year from the date of receipt, and avoid repeat freeze-thaw cycles.

TARGET INFORMATION

Gene ID	6194
Gene Symbol	RPS6
Uniprot ID	RS6_HUMAN
Immunogen	STSKS
Immunogen Region	
Specificity	A synthetic phosphorylated peptide around S240 & S244 of human RPS6 (NP_001001.2).
Immunogen Sequence	STSKS



Immunohistochemistry of paraffin-embedded mouse pancreas using Phospho-S6 Ribosomal Protein (RPS6)-S240/244 rabbit polyclonal antibody (STJ113488) at dilution of 1:50 (40x lens). Perform high pressure antigen retrieval with 10 mM citrate buffer pH 6.0 before commencing with immunohistochemistry staining protocol.



Immunohistochemistry analysis of Phospho-S6 Ribosomal Protein (RPS6)-S240/244 in paraffin-embedded rat brain using Phospho-S6 Ribosomal Protein (RPS6)-S240/244 Rabbit polyclonal antibody (STJ113488) at dilution of 1:50 (40x lens). Perform high pressure antigen retrieval with 10 mM citrate buffer pH 6.0 before commencing with immunohistochemistry staining protocol.

This product is suitable for in-vitro studies under the RESEARCH USE ONLY [RUO] licence. This product must not be used as for diagnostic or other medical purposes.
St John's Laboratory Ltd, Knowledge Dock Business Centre, University Way, London, E16 2RD | Tel: 0208 223 3081