

## Anti-Phospho-RAF1-S259 antibody (STJ113482)

STJ113482

### GENERAL INFORMATION

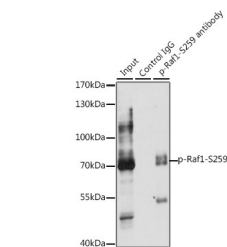
<b>Product Type</b>	Primary antibodies
<b>Short Description</b>	
<b>Applications</b>	WB/IP/ELISA
<b>Host/Source</b>	Rabbit
<b>Reactivity</b>	Human

### PRODUCT PROPERTIES

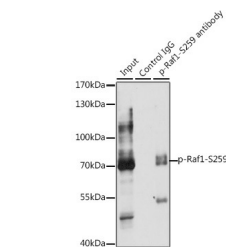
<b>Clonality</b>	Polyclonal
<b>Clone ID</b>	
<b>Concentration</b>	Lot specific
<b>Conjugation</b>	Unconjugated
<b>Purification</b>	Affinity purification
<b>Dilution Range</b>	WB:1:500-1:2000 IP:0.5 Mu g-4 Mu g antibody for 200 Mu g-400 Mu g extracts of whole cells ELISA:Recommended starting concentration is 1 Mu g/mL. Please optimize the concentration based on your specific assay requirements.
<b>Formulation</b>	PBS with 0.02% Sodium Azide, 50% Glycerol, pH 7.3.
<b>Isotype</b>	IgG
<b>Storage Instruction</b>	Store at -20°C for up to 1 year from the date of receipt, and avoid repeat freeze-thaw cycles.

### TARGET INFORMATION

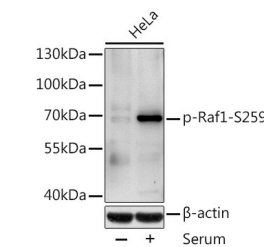
<b>Gene ID</b>	5894
<b>Gene Symbol</b>	RAF1
<b>Uniprot ID</b>	RAF1_HUMAN
<b>Immunogen</b>	STSTP
<b>Immunogen Region</b>	
<b>Specificity</b>	A synthetic phosphorylated peptide around S259 of human Phospho-Raf1-S259 (NP_002871.1).
<b>Immunogen Sequence</b>	STSTP



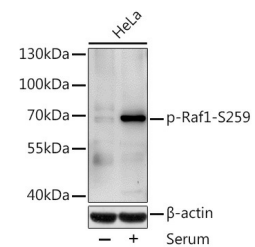
Western blot analysis of extracts of HeLa cells, using Phospho-Raf1-S259 antibody (STJ113482) at 1:1000 dilution. HeLa cells were treated by 10% FBS after serum-starvation overnight. Secondary antibody: HRP Goat Anti-rabbit IgG (H+L) at 1:10000 dilution. Lysates/proteins: 25ug per lane. Blocking buffer: 3% BSA.



Immunoprecipitation analysis of 200 Mu g extracts of HeLa cells, using 3 Mu g Phospho-Raf1-S259 polyclonal antibody (STJ113482). Western blot was performed from the immunoprecipitate using Phospho-Raf1-S259 polyclonal antibody (STJ113482) at a dilution of 1:1000. HeLa cells were treated by 10% FBS at 37 °C for 30 minutes after serum-starvation overnight.



Immunoprecipitation analysis of 200ug extracts of HeLa cells, using 3 ug Phospho-Raf1-S259 polyclonal antibody (STJ113482). Western blot was performed from the immunoprecipitate using Phospho-Raf1-S259 polyclonal antibody (STJ113482) at a dilution of 1:1000. HeLa cells were treated by 10% FBS at 37 °C for 30 minutes after serum-starvation overnight.



Western blot analysis of lysates from HeLa cells, using Phospho-Raf1-S259 Rabbit polyclonal antibody (STJ113482) at 1:1000 dilution. HeLa cells were treated by 10% FBS after serum-starvation overnight. Secondary antibody: HRP Goat Anti-Rabbit IgG (H+L) (STJS000856) at 1:10000 dilution. Lysates/proteins: 25 Mu g per lane. Blocking buffer: 3% BSA.

This product is suitable for in-vitro studies under the RESEARCH USE ONLY [RUO] licence. This product must not be used as for diagnostic or other medical purposes.  
St John's Laboratory Ltd, Knowledge Dock Business Centre, University Way, London, E16 2RD | Tel: 0208 223 3081