

Anti-AFP antibody [S5MM] (STJ113435)

STJ113435

GENERAL INFORMATION

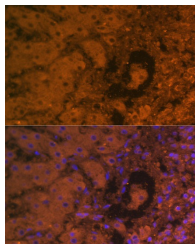
Product Type	Primary antibodies
Short Description	
Applications	WB/IHC-P/IF/ICC/ELISA
Host/Source	Mouse
Reactivity	Human

PRODUCT PROPERTIES

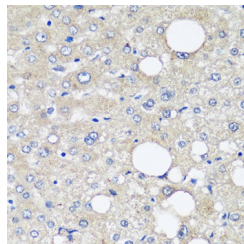
Clonality	Monoclonal
Clone ID	S5MM
Concentration	Lot specific
Conjugation	Unconjugated
Purification	Affinity purification
Dilution Range	WB:1:500-1:1000 IHC-P:1:50-1:200 IF/ICC:1:50-1:200 ELISA:Recommended starting concentration is 1 µg/mL. Please optimize the concentration based on your specific assay requirements.
Formulation	PBS with 0.05% Proclin300, 50% Glycerol, pH 7.3.
Isotype	IgG2bk
Storage Instruction	Store at -20°C for up to 1 year from the date of receipt, and avoid repeat freeze-thaw cycles.

TARGET INFORMATION

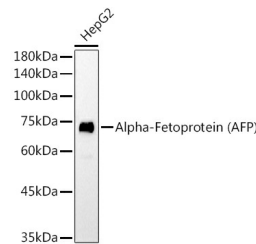
Gene ID	174
Gene Symbol	AFP
Uniprot ID	FETA_HUMAN
Immunogen	
Immunogen Region	
Specificity	Recombinant protein of human Alpha-Fetoprotein (Alpha-Fetoprotein (AFP))
Immunogen Sequence	



Immunofluorescence analysis of paraffin-embedded human liver cancer using Alpha-Fetoprotein (AFP) Mouse monoclonal antibody (STJ113435) at dilution of 1:100. Blue: DAPI for nuclear staining.



Immunohistochemistry analysis of Alpha-Fetoprotein (AFP) in paraffin-embedded human liver cancer using Alpha-Fetoprotein (AFP) Mouse monoclonal antibody (STJ113435) at dilution of 1:12.5 (40x lens). Perform microwave antigen retrieval with 10 mM PBS buffer pH 7.2 before commencing with immunohistochemistry staining protocol.



Western blot analysis of lysates from HepG2 cells, using Alpha-Fetoprotein (AFP) Mouse monoclonal antibody (STJ113435) at 1:1000 dilution. Secondary antibody: HRP Goat Anti-Mouse IgG (H+L) at 1:10000 dilution. Lysates/proteins: 25 µg per lane. Blocking buffer: 3% nonfat dry milk in TBST. Detection: ECL Basic Kit. Exposure time: 180s.

This product is suitable for in-vitro studies under the RESEARCH USE ONLY [RUO] licence. This product must not be used as for diagnostic or other medical purposes.
St John's Laboratory Ltd, Knowledge Dock Business Centre, University Way, London, E16 2RD | Tel: 0208 223 3081