

Anti-GADD45A antibody (1-165) (STJ113355)

STJ113355

GENERAL INFORMATION

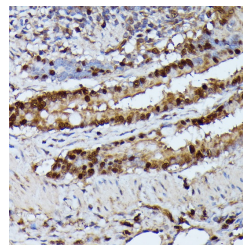
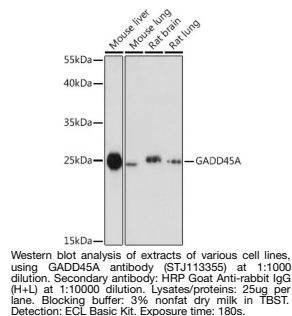
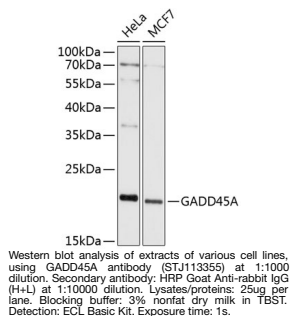
Product Type	Primary antibodies
Short Description	
Applications	WB/IHC-P/IF/ICC/ELISA
Host/Source	Rabbit
Reactivity	Human/Mouse/Rat

PRODUCT PROPERTIES

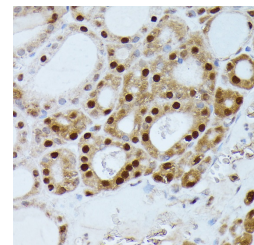
Clonality	Polyclonal
Clone ID	
Concentration	Lot specific
Conjugation	Unconjugated
Purification	Affinity purification
Dilution	WB:1:500-1:2000
Range	IHC-P:1:50-1:200 IF/ICC:1:50-1:200 ELISA:Recommended starting concentration is 1 µg/mL. Please optimize the concentration based on your specific assay requirements.
Formulation	PBS with 0.09% Sodium Azide, 50% Glycerol, pH 7.3.
Isotype	IgG
Storage	Store at -20°C for up to 1 year from the date of receipt, and avoid repeat freeze-thaw cycles.
Instruction	

TARGET INFORMATION

Gene ID	1647
Gene Symbol	GADD45A
Uniprot ID	GA45A_HUMAN
Immunogen	
Region	1-165
Specificity	Recombinant fusion protein containing a sequence corresponding to amino acids 1-165 of human GADD45A (NP_001915.1).
Immunogen Sequence	MTLEEFSAEQKTERMDKVG DALEEVLSKALSQRITTVGV YEAAKLLNVDPDNVLCLLA ADEDDDRDVALQIHFTLIQA FCCENDINILRVSNPGRLEA LLLLET DAGPAASEGAEQPP DLHCVLVTNPHSSQWKDPAL SQLCFCRESRYMDQWVPVI NLPER



Immunohistochemistry of paraffin-embedded rat lung using GADD45A antibody (STJ113355) at dilution of 1:100 (40x lens).



Immunohistochemistry of paraffin-embedded human thyroid cancer using GADD45A antibody (STJ113355) at dilution of 1:100 (40x lens).

This product is suitable for in-vitro studies under the RESEARCH USE ONLY [RUO] licence. This product must not be used as for diagnostic or other medical purposes.
St John's Laboratory Ltd, Knowledge Dock Business Centre, University Way, London, E16 2RD | Tel: 0208 223 3081