

Anti-MMP13 antibody (262-471) (STJ113345)
STJ113345

GENERAL INFORMATION

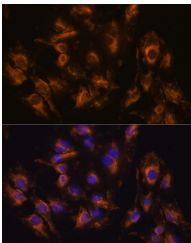
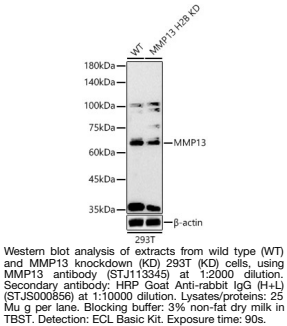
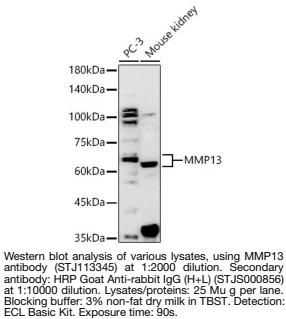
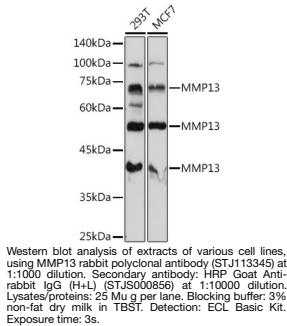
Product Type	Primary antibodies
Short Description	
Applications	WB/IF/ICC/ELISA
Host/Source	Rabbit
Reactivity	Human/Mouse/Rat

PRODUCT PROPERTIES

Clonality	Polyclonal
Clone ID	
Concentration	Lot specific
Conjugation	Unconjugated
Purification	Affinity purification
Dilution	WB:1:1000-1:5000
Range	IF/CC:1:50-1:200 ELISA:Recommended starting concentration is 1 Mu g/mL. Please optimize the concentration based on your specific assay requirements.
Formulation	PBS with 0.01% Thimerosal, 50% Glycerol, pH 7.3.
Isotype	IgG
Storage Instruction	Store at -20°C for up to 1 year from the date of receipt, and avoid repeat freeze-thaw cycles.

TARGET INFORMATION

Gene ID	4322
Gene Symbol	MMP13
Uniprot ID	MMP13_HUMAN
Immunogen	
Immunogen Region	262-471
Specificity	Recombinant fusion protein containing a sequence corresponding to amino acids 262-471 of human MMP13 (NP_002418.1).
Immunogen Sequence	IQSLYGPGEDEPNPKHPKTP DKCDPSLSLDAITSLRGETM IFKDRFFWRLHPQQVDAELF LTKSFWPELPNRIDAAYEHP SHDLIFIFRGRKFWALNGYD ILEGYPKKISELGLPKEVKK ISAAVHFEDTGKTLFSGNQ VWRYYDDTNHIMDKDYPRLE EDFPGIDKDVAYEKNGYI YFFNGPIQFEYSIWSNRIVR VMPANSILWC



Immunofluorescence analysis of C6 cells using MMP13 rabbit polyclonal antibody (STJ113345) at dilution of 1:100 (40x lens). Blue: DAPI for nuclear staining.

This product is suitable for in-vitro studies under the RESEARCH USE ONLY [RUO] licence. This product must not be used as for diagnostic or other medical purposes.
St John's Laboratory Ltd, Knowledge Dock Business Centre, University Way, London, E16 2RD | Tel: 0208 223 3081