

Anti-NQO2 antibody (1-231) (STJ113339)

STJ113339

GENERAL INFORMATION

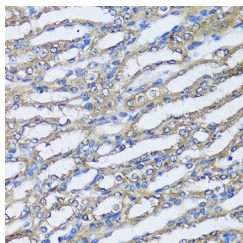
Product Type	Primary antibodies
Short Description	
Applications	WB/IHC-P/ELISA
Host/Source	Rabbit
Reactivity	Human/Mouse

PRODUCT PROPERTIES

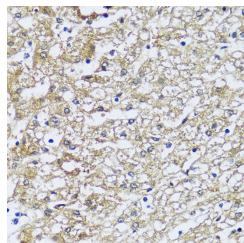
Clonality	Polyclonal
Clone ID	
Concentration	Lot specific
Conjugation	Unconjugated
Purification	Affinity purification
Dilution	WB:1:500-1:2000
Range	IHC-P:1:50-1:200
	ELISA:Recommended starting concentration is 1 µg/mL. Please optimize the concentration based on your specific assay requirements.
Formulation	PBS with 0.01% Thimerosal, 50% Glycerol, pH 7.3.
Isotype	IgG
Storage Instruction	Store at -20°C for up to 1 year from the date of receipt, and avoid repeat freeze-thaw cycles.

TARGET INFORMATION

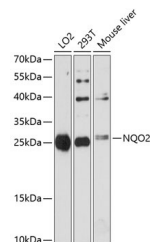
Gene ID	4835
Gene Symbol	NQO2
Uniprot ID	NQO2_HUMAN
Immunogen	
Immunogen Region	1-231
Specificity	Recombinant fusion protein containing a sequence corresponding to amino acids 1-231 of human NQO2 (NP_000895.2).
Immunogen Sequence	MAGKKVLIVYAHQEPKSFNG SLKNVAVDELSRQGCTVTVS DLYAMNLEPRATDKDITGTL SNPEVFNYGVETHEAYKQRS LASDITDEQKKVREADLVIF QFPLYWFSVPAILKGWMDRV LCQGFADFIPGFYDSGLLQG KLALLSVTTGGTAEMYTKTG VNGDSRYFLWPLQHGTLHFC GFKVLAPQISFAPEIASEEE RKGMAVAWSQRLQTIWKEEP IPCTAHWHFQG



Immunohistochemistry analysis of NQO2 in paraffin-embedded mouse kidney using NQO2 Rabbit polyclonal antibody (STJ113339) at dilution of 1:100 (40x lens). Perform microwave antigen retrieval with 10 mM PBS buffer pH 7.2 before commencing with immunohistochemistry staining protocol.



Immunohistochemistry analysis of NQO2 in paraffin-embedded human liver using NQO2 Rabbit polyclonal antibody (STJ113339) at dilution of 1:100 (40x lens). Perform microwave antigen retrieval with 10 mM PBS buffer pH 7.2 before commencing with immunohistochemistry staining protocol.



Western blot analysis of various lysates using NQO2 Rabbit polyclonal antibody (STJ113339) at 1:3000 dilution. Secondary antibody: HRP Goat Anti-Rabbit IgG (H+L) (STJ5000856) at 1:10000 dilution. Lysates/proteins: 25 µg per lane. Blocking buffer: 3% nonfat dry milk in TBST. Detection: ECL Basic Kit. Exposure time: 90s.

This product is suitable for in-vitro studies under the RESEARCH USE ONLY [RUO] licence. This product must not be used as for diagnostic or other medical purposes.

St John's Laboratory Ltd, Knowledge Dock Business Centre, University Way, London, E16 2RD | Tel: 0208 223 3081