

Anti-ACSL3 antibody (652-672) (STJ113279)

STJ113279

GENERAL INFORMATION

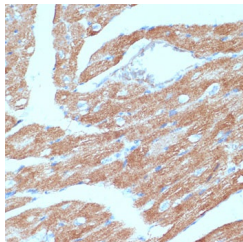
Product Type	Primary antibodies
Short Description	
Applications	WB/IHC-P/ELISA
Host/Source	Rabbit
Reactivity	Human/Mouse/Rat

PRODUCT PROPERTIES

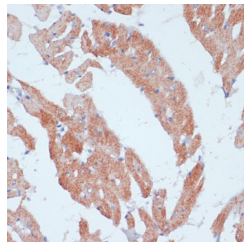
Clonality	Polyclonal
Clone ID	
Concentration	Lot specific
Conjugation	Unconjugated
Purification	Affinity purification
Dilution Range	WB:1:500-1:1000 IHC-P:1:50-1:200 ELISA:Recommended starting concentration is 1 µg/mL. Please optimize the concentration based on your specific assay requirements.
Formulation	PBS with 0.05% Proclin300, 50% Glycerol, pH 7.3.
Isotype	IgG
Storage Instruction	Store at -20°C for up to 1 year from the date of receipt, and avoid repeat freeze-thaw cycles.

TARGET INFORMATION

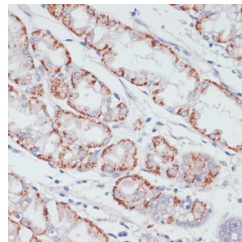
Gene ID	2181
Gene Symbol	ACSL3
Uniprot ID	ACSL3_HUMAN
Immunogen	
Immunogen Region	652-672
Specificity	A synthetic peptide corresponding to a sequence within amino acids 621-720 of human ACSL3 (NP_004448.2).
Immunogen Sequence	VIGFVVPNQKELTELARKKG LKGTWEELCNSEMEVVK VLSEAAISASLEKFEIPVKI RLSPEPWTPETGLVTDAFKL KRKELKTHYQADIERMYGRK



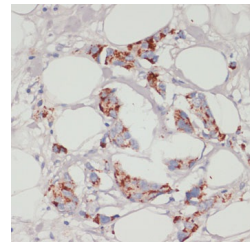
Immunohistochemistry analysis of ACSL3 in paraffin-embedded mouse heart using ACSL3 Rabbit polyclonal antibody (STJ113279) at dilution of 1:100 (40x lens). Perform microwave antigen retrieval with 10 mM PBS buffer pH 7.2 before commencing with immunohistochemistry staining protocol.



Immunohistochemistry analysis of ACSL3 in paraffin-embedded rat heart using ACSL3 Rabbit polyclonal antibody (STJ113279) at dilution of 1:100 (40x lens). Perform microwave antigen retrieval with 10 mM PBS buffer pH 7.2 before commencing with immunohistochemistry staining protocol.



Immunohistochemistry analysis of ACSL3 in paraffin-embedded human stomach using ACSL3 Rabbit polyclonal antibody (STJ113279) at dilution of 1:100 (40x lens). Perform microwave antigen retrieval with 10 mM PBS buffer pH 7.2 before commencing with immunohistochemistry staining protocol.



Immunohistochemistry analysis of ACSL3 in paraffin-embedded human mammary cancer using ACSL3 Rabbit polyclonal antibody (STJ113279) at dilution of 1:100 (40x lens). Perform microwave antigen retrieval with 10 mM PBS buffer pH 7.2 before commencing with immunohistochemistry staining protocol.

This product is suitable for in-vitro studies under the RESEARCH USE ONLY [RUO] licence. This product must not be used as for diagnostic or other medical purposes.
St John's Laboratory Ltd, Knowledge Dock Business Centre, University Way, London, E16 2RD | Tel: 0208 223 3081