

Anti-SMOX antibody (300-544) (STJ113277)
STJ113277

GENERAL INFORMATION

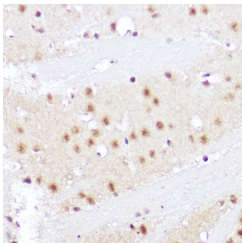
Product Type	Primary antibodies
Short Description	
Applications	WB/IHC-P/ELISA
Host/Source	Rabbit
Reactivity	Human/Mouse/Rat

PRODUCT PROPERTIES

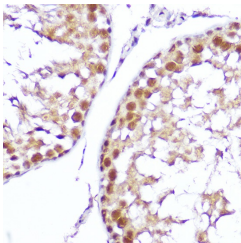
Clonality	Polyclonal
Clone ID	
Concentration	Lot specific
Conjugation	Unconjugated
Purification	Affinity purification
Dilution	WB:1:500-1:1000
Range	IHC-P:1:50-1:200 ELISA:Recommended starting concentration is 1 Mu g/mL. Please optimize the concentration based on your specific assay requirements.
Formulation	PBS with 0.01% Thimerosal, 50% Glycerol, pH 7.3.
Isotype	IgG
Storage Instruction	Store at -20°C for up to 1 year from the date of receipt, and avoid repeat freeze-thaw cycles.

TARGET INFORMATION

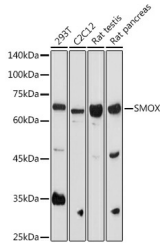
Gene ID	54498
Gene Symbol	SMOX
Uniprot ID	SMOX_HUMAN
Immunogen	
Immunogen Region	300-544
Specificity	Recombinant fusion protein containing a sequence corresponding to amino acids 300-544 of human SMOX (NP_787033.1).
Immunogen Sequence	PRGGRWDEDEQWSVVVECD CELIPADHVIVTVSLGVLKR QYTSFFRPLPTEKVAAIHR LGIGTTDKIFLEFEPPFWGP ECNSLQFVWEDEAESHTLTYPPELWYRKICGFDVLYPPER YGHLVSGWICGEEALVMEKC DDEAVAEICTEMLRQFTGNP NIPKPRILRSAGWSNPYFR GSYSYTQVGSSGADVEKLAK PLPYTESSKTAPMQVLFSGE ATHRKYYSTTHGALLSGQR



Immunohistochemistry analysis of SMOX in paraffin-embedded rat brain using SMOX Rabbit polyclonal antibody (STJ113277) at dilution of 1:100 (40x lens). Perform high pressure antigen retrieval with 10 mM citrate buffer, pH 6, 0 before commencing with immunohistochemistry staining protocol.



Immunohistochemistry analysis of SMOX in paraffin-embedded mouse testis using SMOX Rabbit polyclonal antibody (STJ113277) at dilution of 1:100 (40x lens). Perform high pressure antigen retrieval with 10 mM citrate buffer, pH 6, 0 before commencing with immunohistochemistry staining protocol.



Western blot analysis of various lysates using SMOX Rabbit polyclonal antibody (STJ113277) at 1:1000 dilution. Secondary antibody: HRP Goat Anti-Rabbit IgG (H+L) (STJ5000856) at 1:10000 dilution. Lysates/proteins: 25 Mu g per lane. Blocking buffer: 3% nonfat dry milk in TBST. Detection: ECL Basic Kit. Exposure time: 90s.

This product is suitable for in-vitro studies under the RESEARCH USE ONLY [RUO] licence. This product must not be used as for diagnostic or other medical purposes.
St John's Laboratory Ltd, Knowledge Dock Business Centre, University Way, London, E16 2RD | Tel: 0208 223 3081