

Anti-SLC12A2 antibody (120-1212) (STJ113275)

STJ113275

GENERAL INFORMATION

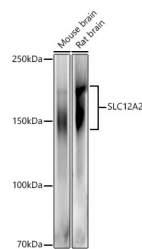
Product Type	Primary antibodies
Short Description	
Applications	WB/IHC-P/ELISA
Host/Source	Rabbit
Reactivity	Human/Mouse/Rat

PRODUCT PROPERTIES

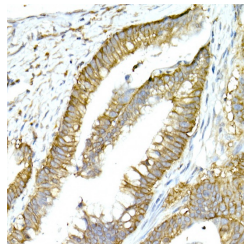
Clonality	Polyclonal
Clone ID	
Concentration	Lot specific
Conjugation	Unconjugated
Purification	Affinity purification
Dilution	WB:1:500-1:1000
Range	IHC-P:1:50-1:200
	ELISA:Recommended starting concentration is 1 μ g/mL. Please optimize the concentration based on your specific assay requirements.
Formulation	PBS with 0.09% Sodium Azide, 50% Glycerol, pH 7.3.
Isotype	IgG
Storage Instruction	Store at -20°C for up to 1 year from the date of receipt, and avoid repeat freeze-thaw cycles.

TARGET INFORMATION

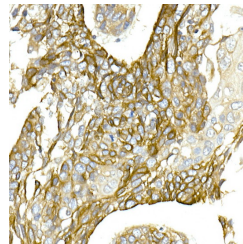
Gene ID	6558
Gene Symbol	SLC12A2
Uniprot ID	S12A2_HUMAN
Immunogen	
Immunogen Region	120-1212
Specificity	Recombinant fusion protein containing a sequence corresponding to amino acids 120-280 of human SLC12A2 (NP_001037.1).
Immunogen Sequence	GEASGESEPAKGSEEAKGRF RVNFVDPAASSAEDSLSDA AGVGVDGPNVSFQNGGDTVL SEGSSLHSGGGGSGHHQHY YYDTHTNTYYLRTFGHNTMD AVPRIDHYRHTAAQLGEKLL RPSLAELHDELEKEPFEDGF ANGEESTPTRDAVWITYAES K



Western blot analysis of extracts of various cell lines, using SLC12A2 antibody (STJ113275) at 1:500 dilution. Secondary antibody: HRP Goat Anti-rabbit IgG (H+L) (STJS000856) at 1:10000 dilution. Lysates/proteins: 25 μ g per lane. Blocking buffer: 3% non-fat dry milk in TBST. Detection: ECL Basic Kit. Exposure time: 30s.



Immunohistochemistry analysis of paraffin-embedded human colon carcinoma, using SLC12A2 rabbit polyclonal antibody (STJ113275) at dilution of 1:50 (40x lens). Perform high pressure antigen retrieval with 10 mM citrate buffer pH 6.0 before commencing with immunohistochemistry staining protocol.



Immunohistochemistry analysis of paraffin-embedded human esophageal cancer, using SLC12A2 rabbit polyclonal antibody (STJ113275) at dilution of 1:50 (40x lens). Perform high pressure antigen retrieval with 10 mM citrate buffer pH 6.0 before commencing with immunohistochemistry staining protocol.

This product is suitable for in-vitro studies under the RESEARCH USE ONLY [RUO] licence. This product must not be used as for diagnostic or other medical purposes.
St John's Laboratory Ltd, Knowledge Dock Business Centre, University Way, London, E16 2RD | Tel: 0208 223 3081