

Anti-RELA antibody (450-551) (STJ113021)
STJ113021

GENERAL INFORMATION

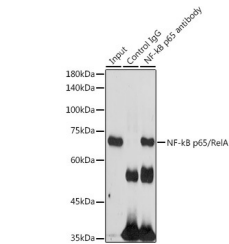
Product Type	Primary antibodies
Short Description	
Applications	WB/IF/ICC/IP/ELISA
Host/Source	Rabbit
Reactivity	Human/Mouse/Rat

PRODUCT PROPERTIES

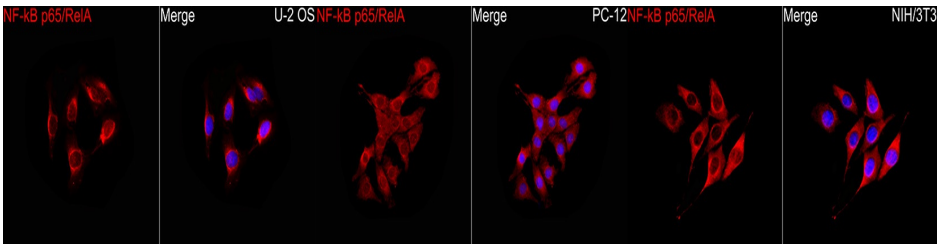
Clonality	Polyclonal
Clone ID	
Concentration	Lot specific
Conjugation	Unconjugated
Purification	Affinity purification
Dilution Range	WB:1:500-1:2000 IF/ICC:1:50-1:200 IP:0.5 Mu g-4 Mu g antibody for 200 Mu g-400 Mu g extracts of whole cells ELISA:Recommended starting concentration is 1 Mu g/mL. Please optimize the concentration based on your specific assay requirements
Formulation	PBS with 0.05% Proclin300, 50% Glycerol, pH 7.3.
Isotype	IgG
Storage Instruction	Store at -20°C for up to 1 year from the date of receipt, and avoid repeat freeze-thaw cycles.

TARGET INFORMATION

Gene ID	5970
Gene Symbol	RELA
Uniprot ID	TF65_HUMAN
Immunogen	
Immunogen Region	450-551
Specificity	A synthetic peptide corresponding to a sequence within amino acids 450-551 of human NF- κ B p65/RelA (NP_068810.3).
Immunogen Sequence	LGALLGNSTDPVFTDLASV DNSEFQQLLNQGIPVAPHTT EPMLMEYPEAITRLVTGAQR PPDPAAPAPLGAPGLPNGLLS GDEFSSSIADMDFSALLSQI SS



Immunoprecipitation analysis of 300 Mu g extracts of 293T cells using 3 Mu g NF- κ B p65/RelA antibody (STJ113021). Western blot was performed from the immunoprecipitate using NF- κ B p65/RelA antibody (STJ113021) at a dilution of 1:1000.



Immunofluorescence analysis of U-2 OS cells using NF- κ B p65/RelA Rabbit polyclonal antibody (STJ113021) at a dilution of 1:100 (40x lens). Secondary antibody: Cy3-conjugated Goat anti-Rabbit IgG (H+L) at 1:500 dilution. Blue: DAPI for nuclear staining.

Immunofluorescence analysis of PC-12 cells using NF- κ B p65/RelA Rabbit polyclonal antibody (STJ113021) at a dilution of 1:100 (40x lens). Secondary antibody: Cy3-conjugated Goat anti-Rabbit IgG (H+L) at 1:500 dilution. Blue: DAPI for nuclear staining.

Immunofluorescence analysis of NIH/3T3 cells using NF- κ B p65/RelA Rabbit polyclonal antibody (STJ113021) at a dilution of 1:100 (40x lens). Secondary antibody: Cy3-conjugated Goat anti-Rabbit IgG (H+L) at 1:500 dilution. Blue: DAPI for nuclear staining.

This product is suitable for in-vitro studies under the RESEARCH USE ONLY [RUO] licence. This product must not be used as for diagnostic or other medical purposes.
St John's Laboratory Ltd, Knowledge Dock Business Centre, University Way, London, E16 2RD | Tel: 0208 223 3081