

Anti-ROCK1 antibody (1100-1200) [S4MR] (STJ112994)

STJ112994

GENERAL INFORMATION

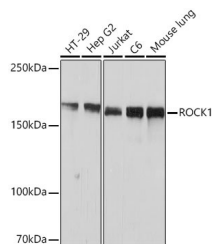
Product Type	Primary antibodies
Short Description	
Applications	WB/ELISA
Host/Source	Rabbit
Reactivity	Human/Mouse/Rat

PRODUCT PROPERTIES

Clonality	Monoclonal
Clone ID	S4MR
Concentration	Lot specific
Conjugation	Unconjugated
Purification	Affinity purification
Dilution Range	WB:1:1000-1:6000 ELISA:Recommended starting concentration is 1 Mu g/mL. Please optimize the concentration based on your specific assay requirements.
Formulation	PBS with 0.02% Sodium Azide, 0.05% BSA, 50% Glycerol, pH 7.3.
Isotype	IgG
Storage Instruction	Store at -20°C for up to 1 year from the date of receipt, and avoid repeat freeze-thaw cycles.

TARGET INFORMATION

Gene ID	6093
Gene Symbol	ROCK1
Uniprot ID	ROCK1_HUMAN
Immunogen	
Immunogen Region	1100-1200
Specificity	A synthetic peptide corresponding to a sequence within amino acids 1100-1200 of human ROCK1 (Q13464).
Immunogen Sequence	STSVASFPSADETGNLPES RIEGWLSVPNRGNIKRYGWK KQYVVVSSKKILFYNDEQDK EQSNPSMVLDIDKLFHVRPV
Sequence	TQGDVYRAETEIPKIFQIL Y



Western blot analysis of extracts of various cell lines, using ROCK1 Rabbit monoclonal antibody (STJ112994) at 1:1000 dilution. Secondary antibody: HRP Goat Anti-Rabbit IgG (H+L) (STJ5000859) at 1:1000 dilution. Lysates/proteins: 25 Mu g per lane. Blocking buffer: 3% nonfat dry milk in TBST. Detection: ECL Basic Kit. Exposure time: 1s.

This product is suitable for in-vitro studies under the RESEARCH USE ONLY [RUO] licence. This product must not be used as for diagnostic or other medical purposes.
St John's Laboratory Ltd, Knowledge Dock Business Centre, University Way, London, E16 2RD | Tel: 0208 223 3081