

**Anti-BRCA1 antibody (400-1863) (STJ112904)**  
STJ112904

**GENERAL INFORMATION**

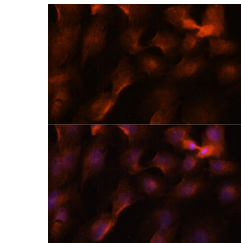
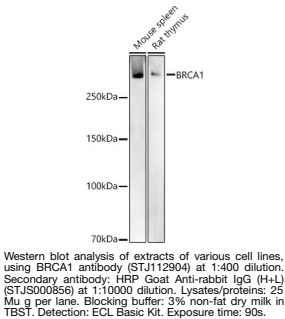
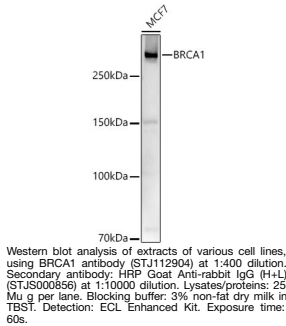
<b>Product Type</b>	Primary antibodies
<b>Short Description</b>	
<b>Applications</b>	WB/IF/ICC/ELISA
<b>Host/Source</b>	Rabbit
<b>Reactivity</b>	Human/Mouse/Rat

**PRODUCT PROPERTIES**

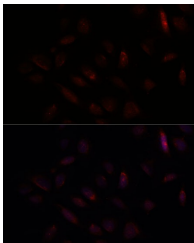
<b>Clonality</b>	Polyclonal
<b>Clone ID</b>	
<b>Concentration</b>	Lot specific
<b>Conjugation</b>	Unconjugated
<b>Purification</b>	Affinity purification
<b>Dilution</b>	WB:1:100-1:500
<b>Range</b>	IF/CC:1:50-1:200 ELISA:Recommended starting concentration is 1 $\mu$ g/mL. Please optimize the concentration based on your specific assay requirements.
<b>Formulation</b>	PBS with 0.02% Sodium Azide, 50% Glycerol, pH 7.3.
<b>Isotype</b>	IgG
<b>Storage Instruction</b>	Store at -20°C for up to 1 year from the date of receipt, and avoid repeat freeze-thaw cycles.

**TARGET INFORMATION**

<b>Gene ID</b>	672
<b>Gene Symbol</b>	BRCA1
<b>Uniprot ID</b>	BRCA1_HUMAN
<b>Immunogen</b>	
<b>Immunogen Region</b>	400-1863
<b>Specificity</b>	Recombinant fusion protein containing a sequence corresponding to amino acids 400-699 of human BRCA1 (NP_009225.1).
<b>Immunogen Sequence</b>	DGESENAKVADVLVDLNEV DEYSGSSEKIDLLASDPHEA LICKSERVHSKSVESNIEDK IFGKTYRKASLPNLSHVTE NLIIGAFVTEPQIIQERPLT NKLKRKRRTSGLHPEDFIK KADLAVQKTPEMINQGTNQT EQNGQVMNITNSGHENKTKG DSIQNEKNPNPIESLEKESA FKTKAEPISSSISNMELELN IHNSKAPKKNRLRRKSSTRH IHALELVSRNLSPPNCTE



Immunofluorescence analysis of C6 cells using BRCA1 antibody (STJ112904) at dilution of 1:100. Blue: DAPI for nuclear staining.



Immunofluorescence analysis of U-2OS cells using BRCA1 antibody (STJ112904) at dilution of 1:100. Blue: DAPI for nuclear staining.

This product is suitable for in-vitro studies under the RESEARCH USE ONLY [RUO] licence. This product must not be used as for diagnostic or other medical purposes.  
St John's Laboratory Ltd, Knowledge Dock Business Centre, University Way, London, E16 2RD | Tel: 0208 223 3081