

Anti-HSD17B1 antibody (1-328) (STJ112735)
STJ112735

GENERAL INFORMATION

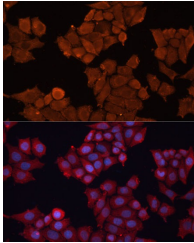
Product Type	Primary antibodies
Short Description	
Applications	WB/IHC-P/IF/ICC/ELISA
Host/Source	Rabbit
Reactivity	Human/Mouse/Rat

PRODUCT PROPERTIES

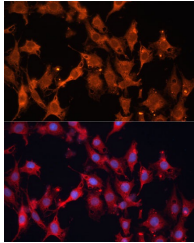
Clonality	Polyclonal
Clone ID	
Concentration	Lot specific
Conjugation	Unconjugated
Purification	Affinity purification
Dilution	WB:1:500-1:2000
Range	IHC-P:1:50-1:200 IF/ICC:1:50-1:200 ELISA:Recommended starting concentration is 1 μ g/mL. Please optimize the concentration based on your specific assay requirements.
Formulation	PBS with 0.01% Thimerosal, 50% Glycerol, pH 7.3.
Isotype	IgG
Storage	Store at -20°C for up to 1 year from the date of receipt, and avoid repeat freeze-thaw cycles.
Instruction	

TARGET INFORMATION

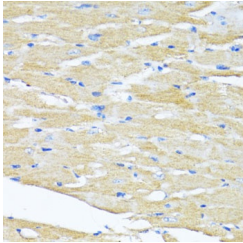
Gene ID	3292
Gene Symbol	HSD17B1
Uniprot ID	DHB1_HUMAN
Immunogen	
Immunogen Region	1-328
Specificity	Recombinant fusion protein containing a sequence corresponding to amino acids 1-328 of human HSD17B1 (NP_000404.2).
Immunogen Sequence	MARTVVLITGCSSGIGLHLA VRLASDPQSFKVYATLRDL KTQGRWLWEAARALACPPGSL ETLQLDVDRSKSVAAARERV TEGRVDLVLCNAGLGLLGPL EALGEDAVASVLDVNVVGTV RMLQAFLPDMKRRGSGRVLV TGSVGGLMGLPFNDVYCASK FALEGLCESLAVLLLPFGVH LSLIECGPVHTAFMEKVLGS PEEVLDRTDIHTFHRFYQYL AHSKQVFREAQNPPEEVAE



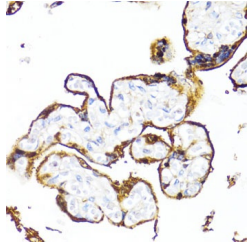
Immunofluorescence analysis of HeLa cells using HSD17B1 Rabbit polyclonal antibody (STJ112735) at dilution of 1:100 (40x lens). Secondary antibody: Cy3 Goat Anti-Rabbit IgG (H+L) at 1:500 dilution. Blue: DAPI for nuclear staining.



Immunofluorescence analysis of C6 cells using HSD17B1 Rabbit polyclonal antibody (STJ112735) at dilution of 1:100 (40x lens). Secondary antibody: Cy3 Goat Anti-Rabbit IgG (H+L) at 1:500 dilution. Blue: DAPI for nuclear staining.



Immunohistochemistry analysis of HSD17B1 in paraffin-embedded mouse heart using HSD17B1 Rabbit polyclonal antibody (STJ112735) at dilution of 1:100 (40x lens). Perform microwave antigen retrieval with 10 mM PBS buffer pH 7.2 before commencing with immunohistochemistry staining protocol.



Immunohistochemistry analysis of HSD17B1 in paraffin-embedded human placenta using HSD17B1 Rabbit polyclonal antibody (STJ112735) at dilution of 1:100 (40x lens). Perform microwave antigen retrieval with 10 mM PBS buffer pH 7.2 before commencing with immunohistochemistry staining protocol.

This product is suitable for in-vitro studies under the RESEARCH USE ONLY [RUO] licence. This product must not be used as for diagnostic or other medical purposes.
St John's Laboratory Ltd, Knowledge Dock Business Centre, University Way, London, E16 2RD | Tel: 0208 223 3081