

Anti-RBM5 antibody (1-130) (STJ112684)

STJ112684

GENERAL INFORMATION

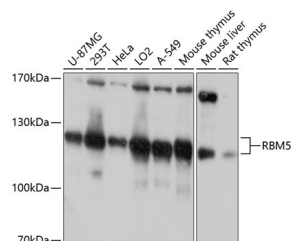
Product Type	Primary antibodies
Short Description	
Applications	WB/ELISA
Host/Source	Rabbit
Reactivity	Human/Mouse/Rat

PRODUCT PROPERTIES

Clonality	Polyclonal
Clone ID	
Concentration	Lot specific
Conjugation	Unconjugated
Purification	Affinity purification
Dilution Range	WB:1:500-1:2000
	ELISA: Recommended starting concentration is 1 µg/mL. Please optimize the concentration based on your specific assay requirements.
Formulation	PBS with 0.01% Thimerosal, 50% Glycerol, pH 7.3.
Isotype	IgG
Storage Instruction	Store at -20°C for up to 1 year from the date of receipt, and avoid repeat freeze-thaw cycles.

TARGET INFORMATION

Gene ID	10181
Gene Symbol	RBM5
Uniprot ID	RBM5_HUMAN
Immunogen	
Immunogen Region	1-130
Specificity	Recombinant fusion protein containing a sequence corresponding to amino acids 1-130 of human RBM5 (NP_005769.1).
Immunogen Sequence	MGSDKRVSRTERSGRYGSII DRDDRDERESRRRRSDYK RSSDDRRGDRYDDYRDYDSP ERERERRNSDRSEDGYHSDG DYGEHDYRHDISDERESKTI MLRGLPITITESDIEMMES FEGPQPADVR



Western blot analysis of various lysates using RBM5 Rabbit polyclonal antibody (STJ112684) at 1:1000 dilution. Secondary antibody: HRP Goat Anti-Rabbit IgG (H+L) (STJS000856) at 1:10000 dilution. Lysates/proteins: 25 µg per lane. Blocking buffer: 3% nonfat dry milk in TBST. Detection: ECL Basic Kit. Exposure time: 30s.

This product is suitable for in-vitro studies under the RESEARCH USE ONLY [RUO] licence. This product must not be used as for diagnostic or other medical purposes.
St John's Laboratory Ltd, Knowledge Dock Business Centre, University Way, London, E16 2RD | Tel: 0208 223 3081