

Anti-SLC6A14 antibody (131-234) (STJ112596)

STJ112596

GENERAL INFORMATION

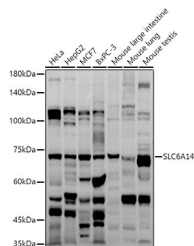
Product Type	Primary antibodies
Short Description	
Applications	WB/ELISA
Host/Source	Rabbit
Reactivity	Human/Mouse

PRODUCT PROPERTIES

Clonality	Polyclonal
Clone ID	
Concentration	Lot specific
Conjugation	Unconjugated
Purification	Affinity purification
Dilution Range	WB:1:500-1:1000 ELISA:Recommended starting concentration is 1 Mu g/mL. Please optimize the concentration based on your specific assay requirements.
Formulation	PBS with 0.05% Proclin300, 50% Glycerol, pH 7.3.
Isotype	IgG
Storage	Store at -20°C for up to 1 year from the date of receipt, and avoid repeat freeze-thaw cycles.
Instruction	

TARGET INFORMATION

Gene ID	11254
Gene Symbol	SLC6A14
Uniprot ID	S6A14_HUMAN
Immunogen	
Immunogen Region	131-234
Specificity	Recombinant fusion protein containing a sequence corresponding to amino acids 131-234 of human SLC6A14 (NP_009162.1).
Immunogen Sequence	YYNVIAYSLYYMFASFQSE LPWKNCSWSDKNCRSPIV THCNVSTVNGIQEIQMKNK SWVDINNFTCINGSEIYQPG QLPSEQYWNKVALQRSSGMN ETGV



Western blot analysis of extracts of various cell lines, using SLC6A14 antibody (STJ112596) at 1:1000 dilution. Secondary antibody: HRP Goat Anti-Rabbit IgG (H+L) (STJ5000856) at 1:10000 dilution. Lysates/proteins: 25 Mu g per lane. Blocking buffer: 3% nonfat dry milk in TBST. Detection: ECL Basic Kit. Exposure time: 90s.

This product is suitable for in-vitro studies under the RESEARCH USE ONLY [RUO] licence. This product must not be used as for diagnostic or other medical purposes.
St John's Laboratory Ltd, Knowledge Dock Business Centre, University Way, London, E16 2RD | Tel: 0208 223 3081