

## Anti-AP1S1 antibody (1-120) (STJ112576)

STJ112576

### GENERAL INFORMATION

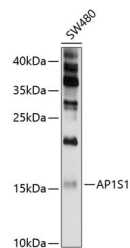
<b>Product Type</b>	Primary antibodies
<b>Short Description</b>	
<b>Applications</b>	WB/ELISA
<b>Host/Source</b>	Rabbit
<b>Reactivity</b>	Human

### PRODUCT PROPERTIES

<b>Clonality</b>	Polyclonal
<b>Clone ID</b>	
<b>Concentration</b>	Lot specific
<b>Conjugation</b>	Unconjugated
<b>Purification</b>	Affinity purification
<b>Dilution Range</b>	WB:1:500-1:1000 ELISA:Recommended starting concentration is 1 Mu g/mL. Please optimize the concentration based on your specific assay requirements.
<b>Formulation</b>	PBS with 0.02% Sodium Azide, 50% Glycerol, pH 7.3.
<b>Isotype</b>	IgG
<b>Storage Instruction</b>	Store at -20°C for up to 1 year from the date of receipt, and avoid repeat freeze-thaw cycles.

### TARGET INFORMATION

<b>Gene ID</b>	1174
<b>Gene Symbol</b>	AP1S1
<b>Uniprot ID</b>	AP1S1_HUMAN
<b>Immunogen Region</b>	1-120
<b>Specificity</b>	Recombinant fusion protein containing a sequence corresponding to amino acids 1-120 of human AP1S1 (NP_001274.1).
<b>Immunogen Sequence</b>	MMRFMLLFSRQGKLRLOKWY LATSDKERKKMVRELMQVVL ARKPKMCSFLEWRDLKVYK RYASLYFCCAIEGQDNELIT LELIHRYVELLDKYFGSVCE LDIIFNFEKAYFILDEFLMG



Western blot analysis of extracts of SW480 cells, using AP1S1 antibody (STJ112576) at 1:1000 dilution. Secondary antibody: HRP Goat Anti-rabbit IgG (H+L) at 1:10000 dilution. Lysates/proteins: 25ug per lane. Blocking buffer: 3% nonfat dry milk in TBST. Detection: ECL Enhanced Kit. Exposure time: 30s.

This product is suitable for in-vitro studies under the RESEARCH USE ONLY [RUO] licence. This product must not be used as for diagnostic or other medical purposes.  
St John's Laboratory Ltd, Knowledge Dock Business Centre, University Way, London, E16 2RD | Tel: 0208 223 3081