

**Anti-P4HA1 antibody (235-534) (STJ112556)**  
STJ112556

**GENERAL INFORMATION**

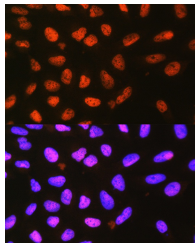
<b>Product Type</b>	Primary antibodies
<b>Short Description</b>	
<b>Applications</b>	WB/IF/ICC/ELISA
<b>Host/Source</b>	Rabbit
<b>Reactivity</b>	Human/Mouse/Rat

**PRODUCT PROPERTIES**

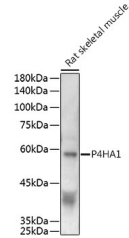
<b>Clonality</b>	Polyclonal
<b>Clone ID</b>	
<b>Concentration</b>	Lot specific
<b>Conjugation</b>	Unconjugated
<b>Purification</b>	Affinity purification
<b>Dilution</b>	WB:1:100-1:500
<b>Range</b>	IF/CC:1:50-1:200 ELISA:Recommended starting concentration is 1 Mu g/mL. Please optimize the concentration based on your specific assay requirements.
<b>Formulation</b>	PBS with 0.05% Proclin300, 50% Glycerol, pH 7.3.
<b>Isotype</b>	IgG
<b>Storage Instruction</b>	Store at -20°C for up to 1 year from the date of receipt, and avoid repeat freeze-thaw cycles.

**TARGET INFORMATION**

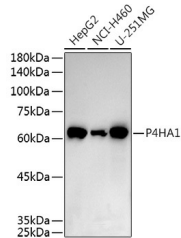
<b>Gene ID</b>	5033
<b>Gene Symbol</b>	P4HA1
<b>Uniprot ID</b>	P4HA1_HUMAN
<b>Immunogen</b>	
<b>Immunogen Region</b>	235-534
<b>Specificity</b>	A synthetic peptide corresponding to a sequence within amino acids 235-534 of human P4HA1 (NP_001017962.1).
<b>Immunogen Sequence</b>	DPEHQRANGNLKYFEYIMAK EKDVNKSASDDQSDQKTPK KKGVAVDYLPERQKYEMLCR GEGIKMTPRRQKKLFCRYHD GNRNPKFILAPAKQEDWDK PRIIRFHDIIISDAEIEIKD LAKPRLRRATISNPITGDLE TVHYRISKSAWLSGYENPVV SRINMRIQDLTGLDVSTAEELQVANYGVGGQYEPHFDFAR KDEPDAFKELGTGNRIATWL FYMSDVSAGGATVFPEVGA



Immunofluorescence analysis of L929 cells using P4HA1 Rabbit polyclonal antibody (STJ112556) at dilution of 1:100 (40x lens). Blue: DAPI for nuclear staining.



Western blot analysis of extracts of Rat skeletal muscle, using P4HA1 antibody (STJ112556) at 1:500 dilution. Secondary antibody: HRP Goat Anti-Rabbit IgG (H+L) (STJS000856) at 1:10000 dilution. Lysates/proteins: 25 Mu g per lane. Blocking buffer: 3% nonfat dry milk in TBST. Detection: ECL Enhanced Kit. Exposure time: 120s.



Western blot analysis of extracts of various cell lines, using P4HA1 antibody (STJ112556) at 1:500 dilution. Secondary antibody: HRP Goat Anti-Rabbit IgG (H+L) (STJS000856) at 1:10000 dilution. Lysates/proteins: 25 Mu g per lane. Blocking buffer: 3% nonfat dry milk in TBST. Detection: ECL Enhanced Kit. Exposure time: 60s.

This product is suitable for in-vitro studies under the RESEARCH USE ONLY [RUO] licence. This product must not be used as for diagnostic or other medical purposes.  
St John's Laboratory Ltd, Knowledge Dock Business Centre, University Way, London, E16 2RD | Tel: 0208 223 3081