

Anti-PCDH17 antibody (610-710) (STJ112535)

STJ112535

GENERAL INFORMATION

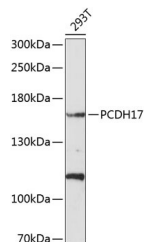
Product Type	Primary antibodies
Short Description	
Applications	WB/ELISA
Host/Source	Rabbit
Reactivity	Human

PRODUCT PROPERTIES

Clonality	Polyclonal
Clone ID	
Concentration	Lot specific
Conjugation	Unconjugated
Purification	Affinity purification
Dilution Range	WB:1:500-1:1000 ELISA:Recommended starting concentration is 1 μ g/mL. Please optimize the concentration based on your specific assay requirements.
Formulation	PBS with 0.02% Sodium Azide, 50% Glycerol, pH 7.3.
Isotype	IgG
Storage Instruction	Store at -20°C for up to 1 year from the date of receipt, and avoid repeat freeze-thaw cycles.

TARGET INFORMATION

Gene ID	27253
Gene Symbol	PCDH17
Uniprot ID	PCD17_HUMAN
Immunogen	
Immunogen Region	610-710
Specificity	Recombinant fusion protein containing a sequence corresponding to amino acids 610-710 of human PCDH17 (NP_001035519.1).
Immunogen Sequence	VRALDSDFGESGRLTYEIVD GNDDHLFEIDPSSGEIRTLH PFWEDVTPVVELVVKVTDHG KPTLSAVAKLIIRSVSGSLP EGVPRVNGEQHHWDMSLPLI V



Western blot analysis of lysates from 293T cells, using PCDH17 Rabbit polyclonal antibody (STJ112535) at 1:1000 dilution. Secondary antibody: HRP Goat Anti-Rabbit IgG (H+L) (STJ5000856) at 1:10000 dilution. Lysates/proteins: 25 μ g per lane. Blocking buffer: 3% nonfat dry milk in TBST. Detection: ECL Enhanced Kit. Exposure time: 60s.

This product is suitable for in-vitro studies under the RESEARCH USE ONLY [RUO] licence. This product must not be used as for diagnostic or other medical purposes.
St John's Laboratory Ltd, Knowledge Dock Business Centre, University Way, London, E16 2RD | Tel: 0208 223 3081