

**Anti-RASGRP1 antibody (598-797) (STJ112519)**  
STJ112519

**GENERAL INFORMATION**

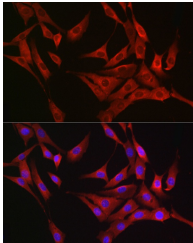
<b>Product Type</b>	Primary antibodies
<b>Short Description</b>	
<b>Applications</b>	WB/IF/ICC/ELISA
<b>Host/Source</b>	Rabbit
<b>Reactivity</b>	Human/Mouse/Rat

**PRODUCT PROPERTIES**

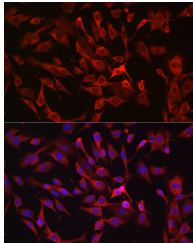
<b>Clonality</b>	Polyclonal
<b>Clone ID</b>	
<b>Concentration</b>	Lot specific
<b>Conjugation</b>	Unconjugated
<b>Purification</b>	Affinity purification
<b>Dilution</b>	WB:1:500-1:1000
<b>Range</b>	IF/CC:1:50-1:200
	ELISA:Recommended starting concentration is 1 $\mu$ g/mL. Please optimize the concentration based on your specific assay requirements.
<b>Formulation</b>	PBS with 0.02% Sodium Azide, 50% Glycerol, pH 7.3.
<b>Isotype</b>	IgG
<b>Storage Instruction</b>	Store at -20°C for up to 1 year from the date of receipt, and avoid repeat freeze-thaw cycles.

**TARGET INFORMATION**

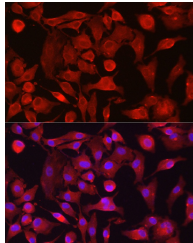
<b>Gene ID</b>	10125
<b>Gene Symbol</b>	RASGRP1
<b>Uniprot ID</b>	GRP1_HUMAN
<b>Immunogen</b>	
<b>Immunogen Region</b>	598-797
<b>Specificity</b>	Recombinant fusion protein containing a sequence corresponding to amino acids 598-797 of human RASGRP1 (NP_005730.2).
<b>Immunogen Sequence</b>	PVAPTENNNTSVGPVSNLCSL GAKDLLHAPEEGPFTFPNGE AVEHGEESKDRTIMLMGVSS QKISRLRKRAVAHKATQTES QPWIGSEGPSGPFVLSSPRK TAQDTLYVLPSPTSPCPSPV LVRKRAFKWENKDSLISK EELRHRLPTYQELEQEINT LKADNDALKIQLKYAQKKIE SLQLEKSNHVLQMEQGDSC



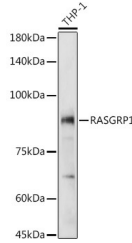
Immunofluorescence analysis of NIH/3T3 cells using RASGRP1 Rabbit polyclonal antibody (STJ112519) at dilution of 1:100 (40x lens). Secondary antibody: Cy3 Goat Anti-Rabbit IgG (H+L) at 1:500 dilution. Blue: DAPI for nuclear staining.



Immunofluorescence analysis of C6 cells using RASGRP1 Rabbit polyclonal antibody (STJ112519) at dilution of 1:100 (40x lens). Secondary antibody: Cy3 Goat Anti-Rabbit IgG (H+L) at 1:500 dilution. Blue: DAPI for nuclear staining.



Immunofluorescence analysis of A-549 cells using RASGRP1 Rabbit polyclonal antibody (STJ112519) at dilution of 1:100 (40x lens). Secondary antibody: Cy3 Goat Anti-Rabbit IgG (H+L) at 1:500 dilution. Blue: DAPI for nuclear staining.



Western blot analysis of lysates from THP-1 cells, using RASGRP1 Rabbit polyclonal antibody (STJ112519) at 1:1000 dilution. Secondary antibody: HRP Goat Anti-Rabbit IgG (H+L) (STJ500856) at 1:10000 dilution. Lysates/proteins: 25  $\mu$ g per lane. Blocking buffer: 3% nonfat dry milk in TBST. Detection: ECL Basic Kit. Exposure time: 30s.

This product is suitable for in-vitro studies under the RESEARCH USE ONLY [RUO] licence. This product must not be used as for diagnostic or other medical purposes.  
St John's Laboratory Ltd, Knowledge Dock Business Centre, University Way, London, E16 2RD | Tel: 0208 223 3081