

Anti-TRAPPC2 antibody (1-140) (STJ112494)

STJ112494

GENERAL INFORMATION

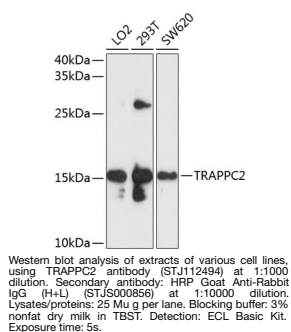
Product Type	Primary antibodies
Short Description	
Applications	WB/ELISA
Host/Source	Rabbit
Reactivity	Human

PRODUCT PROPERTIES

Clonality	Polyclonal
Clone ID	
Concentration	Lot specific
Conjugation	Unconjugated
Purification	Affinity purification
Dilution	WB:1:500-1:2000
Range	ELISA:Recommended starting concentration is 1 µg/mL. Please optimize the concentration based on your specific assay requirements.
Formulation	PBS with 0.02% Sodium Azide, 50% Glycerol, pH 7.3.
Isotype	IgG
Storage	Store at -20°C for up to 1 year from the date of receipt, and avoid repeat freeze-thaw cycles.
Instruction	

TARGET INFORMATION

Gene ID	6399
Gene Symbol	TRAPPC2
Uniprot ID	TPC2A_HUMAN
Immunogen	
Immunogen Region	1-140
Specificity	Recombinant fusion protein containing a sequence corresponding to amino acids 1-140 of human TRAPPC2 (NP_055378.1).
Immunogen Sequence	MSGSFYFVIVGHHDNPVFEM EFLPAGKAESKDDHRHLNQF IAHAALDLVDENMWLSNNMY LKTVDFKNEWVSAFVTAGH MRFIMLHDIRQEDGIKNFFT DVYDLYIKFSMPNPFYEPNSP IRSSAFDRKVQFLGKKHLLS



This product is suitable for in-vitro studies under the RESEARCH USE ONLY [RUO] licence. This product must not be used as for diagnostic or other medical purposes.
St John's Laboratory Ltd, Knowledge Dock Business Centre, University Way, London, E16 2RD | Tel: 0208 223 3081