

Anti-CYC1 antibody (85-291) (STJ112478)

STJ112478

GENERAL INFORMATION

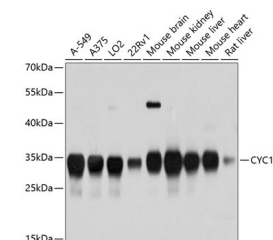
Product Type	Primary antibodies
Short Description	
Applications	WB/IHC-P/ELISA
Host/Source	Rabbit
Reactivity	Human/Mouse/Rat

PRODUCT PROPERTIES

Clonality	Polyclonal
Clone ID	
Concentration	Lot specific
Conjugation	Unconjugated
Purification	Affinity purification
Dilution	WB: 1:500-1:2000
Range	IHC-P: 1:100-1:200 ELISA: Recommended starting concentration is 1 µg/mL. Please optimize the concentration based on your specific assay requirements.
Formulation	PBS with 0.02% Sodium Azide, 50% Glycerol, pH 7.3.
Isotype	IgG
Storage	Store at -20°C for up to 1 year from the date of receipt, and avoid repeat freeze-thaw cycles.
Instruction	

TARGET INFORMATION

Gene ID	1537
Gene Symbol	CYC1
Uniprot ID	CY1_HUMAN
Immunogen	
Immunogen Region	85-291
Specificity	Recombinant fusion protein containing a sequence corresponding to amino acids 85-291 of human CYC1 (NP_001907.2).
Immunogen Sequence	SDLELHPPSPYWSHRGLLS LDHTSIRRGFQVYKQVCASC HSMDFVAYRHLVGVCYTEDE AKELAAEVEVQDGPNEGEM FMRPGKLFDYFPKPYPNSEA ARAANNALPPDLSYIVRAR HGGEDYVFSLLTGYPEPTG VSLREGLYFNPYFPGQAAM APPIYTDVLEFDDGTPATMS QIAKDVCTFLRWASEPEHDH RKRMLGK



Western blot analysis of extracts of various cell lines, using CYC1 antibody (STJ112478) at 1:3000 dilution. Secondary antibody: HRP Goat Anti-Rabbit IgG (H+L) (STJ5000856) at 1:10000 dilution. Lysates/proteins: 25 µg per lane. Blocking buffer: 3% nonfat dry milk in TBST. Detection: ECL Basic Kit. Exposure time: 1s.

This product is suitable for in-vitro studies under the RESEARCH USE ONLY [RUO] licence. This product must not be used as for diagnostic or other medical purposes.
St John's Laboratory Ltd, Knowledge Dock Business Centre, University Way, London, E16 2RD | Tel: 0208 223 3081