

Anti-CHMP2A antibody (1-222) (STJ112416)

STJ112416

GENERAL INFORMATION

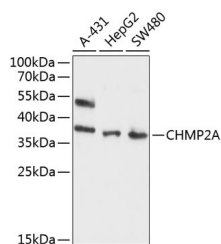
Product Type	Primary antibodies
Short Description	
Applications	WB/ELISA
Host/Source	Rabbit
Reactivity	Human

PRODUCT PROPERTIES

Clonality	Polyclonal
Clone ID	
Concentration	Lot specific
Conjugation	Unconjugated
Purification	Affinity purification
Dilution	WB:1:500-1:2000
Range	ELISA:Recommended starting concentration is 1 µg/mL. Please optimize the concentration based on your specific assay requirements.
Formulation	PBS with 0.02% Sodium Azide, 50% Glycerol, pH 7.3.
Isotype	IgG
Storage	Store at -20°C for up to 1 year from the date of receipt, and avoid repeat freeze-thaw cycles.
Instruction	

TARGET INFORMATION

Gene ID	27243
Gene Symbol	CHMP2A
Uniprot ID	CHM2A_HUMAN
Immunogen	
Immunogen Region	1-222
Specificity	Recombinant fusion protein containing a sequence corresponding to amino acids 1-222 of human CHMP2A (NP_055268.1).
Immunogen Sequence	MDLLFGRRKTPEELLRQNQR ALNRRAMRELDREERQKLETQE KKIIADIKKMAKQGQMDAVR IMAKDLVRTRRYVRKFVLMR ANIQAVSLKIQTLSNNSMA QAMKGVTKAMGTMNRQLKLP QIQKIMMEFERQAEIMDMKE EMMNDAIDDAMGDEEDEEEES DAVSVQLDELGLSLTDELS NLPSTGGSLVAAGGKKAEA AASALADADADLEERLKNLR RD



Western blot analysis of extracts of various cell lines, using CHMP2A antibody (STJ112416) at 1:1000 dilution. Secondary antibody: HRP Goat Anti-Rabbit IgG (H+L) (STJS000856) at 1:10000 dilution. Lysates/proteins: 25 µg per lane. Blocking buffer: 3% nonfat dry milk in TBST. Detection: ECL Enhanced Kit. Exposure time: 90s.

This product is suitable for in-vitro studies under the RESEARCH USE ONLY [RUO] licence. This product must not be used as for diagnostic or other medical purposes.
St John's Laboratory Ltd, Knowledge Dock Business Centre, University Way, London, E16 2RD | Tel: 0208 223 3081