

Anti-IL12RB2 antibody (420-620) (STJ112386)

STJ112386

GENERAL INFORMATION

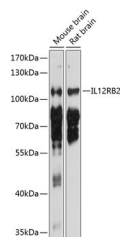
Product Type	Primary antibodies
Short Description	
Applications	WB/ELISA
Host/Source	Rabbit
Reactivity	Mouse/Rat

PRODUCT PROPERTIES

Clonality	Polyclonal
Clone ID	
Concentration	Lot specific
Conjugation	Unconjugated
Purification	Affinity purification
Dilution	WB:1:1000-1:2000
Range	ELISA:Recommended starting concentration is 1 Mu g/mL. Please optimize the concentration based on your specific assay requirements.
Formulation	PBS with 0.02% Sodium Azide, 50% Glycerol, pH 7.3.
Isotype	IgG
Storage	Store at -20°C for up to 1 year from the date of receipt, and avoid repeat freeze-thaw cycles.
Instruction	

TARGET INFORMATION

Gene ID	3595
Gene Symbol	IL12RB2
Uniprot ID	I12R2_HUMAN
Immunogen	
Immunogen Region	420-620
Specificity	Recombinant fusion protein containing a sequence corresponding to amino acids 420-620 of human IL12RB2 (NP_001550.1). GLLAPRQVSANSEGMDNILV TWQPPRKDPSAVQEYVVEWR ELHPGGDTQVPLNWLRSRPY NVSALISENIKSYICYEIRV YALSGDQGGCSSLGNSKHK APLSGPHINAITEEKGSLI SWNSIPVQEQMGCLLHYRIY WKERDSNSQPLCEIPYRVS QNSHPINSLQPRVTYVLWMT ALTAAGESSHGNEREFCLQG K
Immunogen Sequence	



Western blot analysis of extracts of various cell lines, using IL12RB2 antibody (STJ112386) at 1:1000 dilution. Secondary antibody: HRP Goat Anti-Rabbit IgG (H+L) (STJS000856) at 1:10000 dilution. Lysates/proteins: 25 Mu g per lane. Blocking buffer: 3% nonfat dry milk in TBST. Detection: ECL Basic Kit. Exposure time: 5s.

This product is suitable for in-vitro studies under the RESEARCH USE ONLY [RUO] licence. This product must not be used as for diagnostic or other medical purposes.
St John's Laboratory Ltd, Knowledge Dock Business Centre, University Way, London, E16 2RD | Tel: 0208 223 3081