

Anti-CISD1 antibody (29-108) (STJ112355)

STJ112355

GENERAL INFORMATION

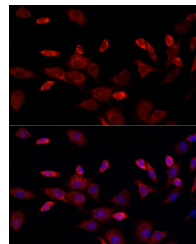
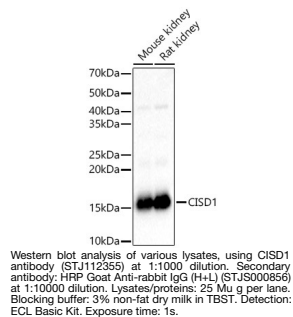
Product Type	Primary antibodies
Short Description	
Applications	WB/IF/ICC/ELISA
Host/Source	Rabbit
Reactivity	Mouse/Rat

PRODUCT PROPERTIES

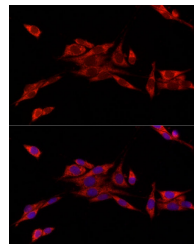
Clonality	Polyclonal
Clone ID	
Concentration	Lot specific
Conjugation	Unconjugated
Purification	Affinity purification
Dilution Range	WB:1:500-1:1000 IF/ICC:1:50-1:200 ELISA:Recommended starting concentration is 1 µg/mL. Please optimize the concentration based on your specific assay requirements.
Formulation	PBS with 0.02% Sodium Azide, 50% Glycerol, pH 7.3.
Isotype	IgG
Storage Instruction	Store at -20°C for up to 1 year from the date of receipt, and avoid repeat freeze-thaw cycles.

TARGET INFORMATION

Gene ID	55847
Gene Symbol	CISD1
Uniprot ID	CISD1_HUMAN
Immunogen	
Immunogen Region	29-108
Specificity	Recombinant fusion protein containing a sequence corresponding to amino acids 29-108 of human CISD1 (NP_060934.1).
Immunogen Sequence	LAYKRFYVKDHRNKAMINLH IQKDNPKIVHAFDMEDLGDK AVYCRCWRSKKFFPCDGAHT KHNEETGDNVGPLIKKKET



Immunofluorescence analysis of NIH/3T3 cells using CISD1 rabbit polyclonal antibody (STJ112355) at dilution of 1:100 (40x lens). Blue: DAPI for nuclear staining.



Immunofluorescence analysis of PC-12 cells using CISD1 rabbit polyclonal antibody (STJ112355) at dilution of 1:100 (40x lens). Blue: DAPI for nuclear staining.