

Anti-SMARCA1 antibody (1-200) (STJ112286)

STJ112286

GENERAL INFORMATION

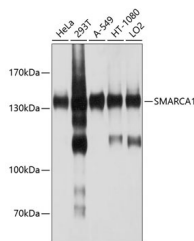
Product Type	Primary antibodies
Short Description	
Applications	WB/IHC-P/IF/ICC/IP/ELISA
Host/Source	Rabbit
Reactivity	Human/Mouse/Rat

PRODUCT PROPERTIES

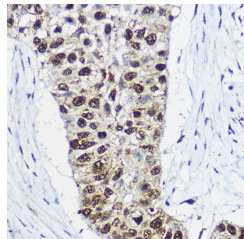
Clonality	Polyclonal
Clone ID	
Concentration	Lot specific
Conjugation	Unconjugated
Purification	Affinity purification
Dilution	WB:1:1000-1:2000
Range	IHC-P:1:50-1:200 IF/ICC:1:50-1:200 IP:0.5 Mu g-4 Mu g antibody for 200 Mu g-400 Mu g extracts of whole cells ELISA:Recommended starting concentration is 1 Mu g/mL. Please optimize the concentration based on your speci
Formulation	PBS with 0.02% Sodium Azide, 50% Glycerol, pH 7.3.
Isotype	IgG
Storage	Store at -20°C for up to 1 year from the date of receipt, and avoid repeat freeze-thaw cycles.
Instruction	

TARGET INFORMATION

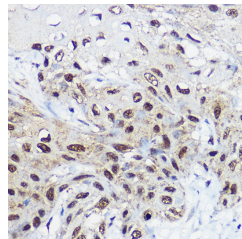
Gene ID	6594
Gene Symbol	SMARCA1
Uniprot ID	SMCA1_HUMAN
Immunogen	
Immunogen Region	1-200
Specificity	Recombinant fusion protein containing a sequence corresponding to amino acids 1-200 of human SMARCA1 (NP_003060.2).
Immunogen Sequence	MEQDTAAVAATVAAADATAT IVVIEDEQPGPSTSQEEGAA AAATEATAATEKGEKKKEKN VSSFQKLAAKAPKSEKEMD PEYEEKMKADRKRFEFLK QTELFHFQPSAQKSPTSP LNMKLGRRPRIKKDEKQSLIS AGDYRHRRTQEDEELLSE SRKTSNVCIRFEVSPSYVKG GPLRDYQIRGLNLWLISLYEN



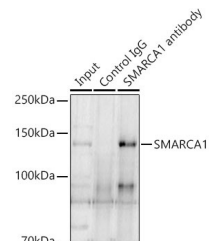
Western blot analysis of extracts of various cell lines, using SMARCA1 antibody (STJ112286) at 1:1000 dilution. Secondary antibody: HRP Goat Anti-rabbit IgG (H+L) (STJS000856) at 1:10000 dilution. Lysates/proteins: 25 Mu g per lane. Blocking buffer: 3% non-fat dry milk in TBS-T. Detection: ECL Basic Kit. Exposure time: 15s.



Immunohistochemistry analysis of paraffin-embedded human lung cancer using SMARCA1 rabbit polyclonal antibody (STJ112286) at dilution of 1:100 (40x lens). Perform high pressure antigen retrieval with 10 mM citrate buffer pH 6.0 before commencing with immunohistochemistry staining protocol.



Immunohistochemistry analysis of paraffin-embedded human esophageal cancer using SMARCA1 rabbit polyclonal antibody (STJ112286) at dilution of 1:100 (40x lens). Perform high pressure antigen retrieval with 10 mM citrate buffer pH 6.0 before commencing with immunohistochemistry staining protocol.



Immunoprecipitation analysis of 300 Mu g extracts of A-431 cells using 3 Mu g SMARCA1 rabbit polyclonal antibody (STJ112286). Western blot was performed from the immunoprecipitate using SMARCA1 rabbit polyclonal antibody (STJ112286) at a dilution of 1:1000.

This product is suitable for in-vitro studies under the RESEARCH USE ONLY [RUO] licence. This product must not be used as for diagnostic or other medical purposes.
St John's Laboratory Ltd, Knowledge Dock Business Centre, University Way, London, E16 2RD | Tel: 0208 223 3081