

Anti-SLC25A1 antibody (1-311) (STJ112285)  
STJ112285

GENERAL INFORMATION

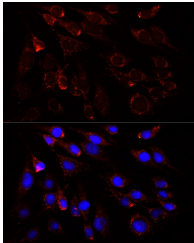
Product Type	Primary antibodies
Short Description	
Applications	WB/IF/ICC/ELISA
Host/Source	Rabbit
Reactivity	Human/Mouse/Rat

PRODUCT PROPERTIES

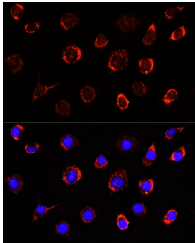
Clonality	Polyclonal
Clone ID	
Concentration	Lot specific
Conjugation	Unconjugated
Purification	Affinity purification
Dilution	WB: 1:500-1:2000
Range	IF/CC: 1:50-1:200
	ELISA: Recommended starting concentration is 1 µg/mL. Please optimize the concentration based on your specific assay requirements.
Formulation	PBS with 0.02% Sodium Azide, 50% Glycerol, pH 7.3.
Isotype	IgG
Storage Instruction	Store at -20°C for up to 1 year from the date of receipt, and avoid repeat freeze-thaw cycles.

TARGET INFORMATION

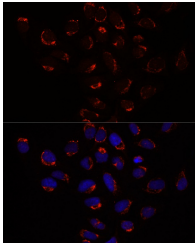
Gene ID	6576
Gene Symbol	SLC25A1
Uniprot ID	TXTP_HUMAN
Immunogen	
Immunogen Region	1-311
Specificity	Recombinant fusion protein containing a sequence corresponding to amino acids 1-311 of human SLC25A1 (NP_005975.1).
Immunogen Sequence	MPAPRAPRALAAAPASGKA KLTHPGKAILAGGLAGGIEI CITFPTEYVKQLQLDERSH PPRYRGIGDCVRQTVRSHGV LGLYRGLSLLYGSIPKAAV RFGMFEFLSNHMRDAQGRDL STRGLLCGLGAGVAEAVVV CPMTIKVKFIHDQTSNPVK YRGFFHGVREIVREQGLKGT YQGLTATVLKQGSNQAIRFF VMTSLRNWYRGDNPKNPMNP LITGVFGAIGAASVFGNT



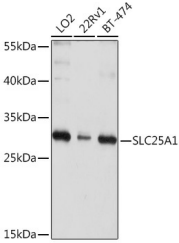
Immunofluorescence analysis of C6 cells using SLC25A1 antibody (STJ112285) at dilution of 1:100. Blue: DAPI for nuclear staining.



Immunofluorescence analysis of L929 cells using SLC25A1 antibody (STJ112285) at dilution of 1:100. Blue: DAPI for nuclear staining.



Immunofluorescence analysis of U2OS cells using SLC25A1 antibody (STJ112285) at dilution of 1:100. Blue: DAPI for nuclear staining.



Western blot analysis of extracts of various cell lines, using SLC25A1 Rabbit polyclonal antibody (STJ112285) at 1:1000 dilution. Secondary antibody: HRP Goat Anti-Rabbit IgG (H+L) (STJ5000856) at 1:10000 dilution. Lysates/proteins: 25 µg per lane. Blocking buffer: 3% nonfat dry milk in TBST. Detection: ECL Basic Kit. Exposure time: 5s.

This product is suitable for in-vitro studies under the RESEARCH USE ONLY [RUO] licence. This product must not be used as for diagnostic or other medical purposes.  
St John's Laboratory Ltd, Knowledge Dock Business Centre, University Way, London, E16 2RD | Tel: 0208 223 3081