

Anti-EPHB3 antibody (779-998) (STJ112252)

STJ112252

GENERAL INFORMATION

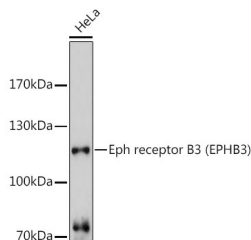
Product Type	Primary antibodies
Short Description	
Applications	WB/ELISA
Host/Source	Rabbit
Reactivity	Human/Mouse/Rat

PRODUCT PROPERTIES

Clonality	Polyclonal
Clone ID	
Concentration	Lot specific
Conjugation	Unconjugated
Purification	Affinity purification
Dilution	WB:1:500-1:2000
Range	ELISA:Recommended starting concentration is 1 µg/mL. Please optimize the concentration based on your specific assay requirements.
Formulation	PBS with 0.02% Sodium Azide, 50% Glycerol, pH 7.3.
Isotype	IgG
Storage	Store at -20°C for up to 1 year from the date of receipt, and avoid repeat freeze-thaw cycles.
Instruction	

TARGET INFORMATION

Gene ID	2049
Gene Symbol	EPHB3
Uniprot ID	EPHB3_HUMAN
Immunogen	
Immunogen Region	779-998
Specificity	Recombinant fusion protein containing a sequence corresponding to amino acids 779-998 of human Eph receptor B3 (EPHB3) (NP_004434.2).
Immunogen Sequence	LSRFLEDDPSDPTYTSSLGG KIPIRWTAPEAIYRKFTSA SDVWSYGIVMWEVMSYGERP YWDMNSQDVINAVEQDYRLP PPMDCPTALHQLMLDCWVRD RNLRPKFSQIVNTLDKLI RN AASLKVIASAQSGMSQPLLD RTVPDYTTFTTVGDWLDAIK MGRYKESFVSAGFASFDLVA QMTAEDLLRIGVTLAGHQKK ILSSIQDMRLQMNQTLVPVQV



Western blot analysis of extracts of HeLa cells, using Eph receptor B3 (Eph receptor B3 (EPHB3)) antibody (STJ112252) at 1:3000 dilution. Secondary antibody: HRP Goat Anti-rabbit IgG (H+L) at 1:10000 dilution. Lysates/proteins: 25µg per lane. Blocking buffer: 3% nonfat dry milk in TBST. Detection: ECL Basic Kit. Exposure time: 90s.

This product is suitable for in-vitro studies under the RESEARCH USE ONLY [RUO] licence. This product must not be used as for diagnostic or other medical purposes.

St John's Laboratory Ltd, Knowledge Dock Business Centre, University Way, London, E16 2RD | Tel: 0208 223 3081