

Anti-ZSCAN4 antibody (400-506) (STJ112243)

STJ112243

GENERAL INFORMATION

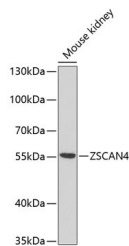
Product Type	Primary antibodies
Short Description	
Applications	WB/ELISA
Host/Source	Rabbit
Reactivity	Mouse

PRODUCT PROPERTIES

Clonality	Polyclonal
Clone ID	
Concentration	Lot specific
Conjugation	Unconjugated
Purification	Affinity purification
Dilution Range	WB:1:500-1:2000 ELISA:Recommended starting concentration is 1 Mu g/mL. Please optimize the concentration based on your specific assay requirements.
Formulation	PBS with 0.02% Sodium Azide, 50% Glycerol, pH 7.3.
Isotype	IgG
Storage	Store at -20°C for up to 1 year from the date of receipt, and avoid repeat freeze-thaw cycles.
Instruction	

TARGET INFORMATION

Gene ID	245109
Gene Symbol	Zscan4c
Uniprot ID	ZSC4C_MOUSE
Immunogen	
Immunogen Region	400-506
Specificity	A synthetic peptide corresponding to a sequence within amino acids 400-506 of mouse ZSCAN4 (NP_001013787.1).
Immunogen Sequence	CSRMFKHARSLSSHQRTHLN KKSELLCVTCQKMFKRVS DR RTHEIIHMPEKPFKCSTCEK SFSHKTNLKSHEMIHTGEMP YVCSLCSRRFRQSSTYHRHL RNYHRSD



Western blot analysis of extracts of mouse kidney, using ZSCAN4 antibody (STJ112243) at 1:1000 dilution. Secondary antibody: HRP Goat Anti-Rabbit IgG (H+L) (STJS000856) at 1:10000 dilution. Lysates/proteins: 25 Mu g per lane. Blocking buffer: 3% nonfat dry milk in TBST. Detection: ECL Basic Kit. Exposure time: 90s.

This product is suitable for in-vitro studies under the RESEARCH USE ONLY [RUO] licence. This product must not be used as for diagnostic or other medical purposes.
St John's Laboratory Ltd, Knowledge Dock Business Centre, University Way, London, E16 2RD | Tel: 0208 223 3081