

Anti-LOXL1 antibody (95-370) (STJ112229)

STJ112229

GENERAL INFORMATION

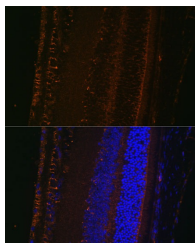
Product Type	Primary antibodies
Short Description	
Applications	WB/IF/ICC/ELISA
Host/Source	Rabbit
Reactivity	Human/Mouse

PRODUCT PROPERTIES

Clonality	Polyclonal
Clone ID	
Concentration	Lot specific
Conjugation	Unconjugated
Purification	Affinity purification
Dilution	WB:1:500-1:1000
Range	IF/CC:1:50-1:200
	ELISA:Recommended starting concentration is 1 μ g/mL. Please optimize the concentration based on your specific assay requirements.
Formulation	PBS with 0.02% Sodium Azide, 50% Glycerol, pH 7.3.
Isotype	IgG
Storage Instruction	Store at -20°C for up to 1 year from the date of receipt, and avoid repeat freeze-thaw cycles.

TARGET INFORMATION

Gene ID	4016
Gene Symbol	LOXL1
Uniprot ID	LOXL1_HUMAN
Immunogen	
Immunogen Region	95-370
Specificity	Recombinant fusion protein containing a sequence corresponding to amino acids 95-370 of human LOXL1 (NP_005567.2).
Immunogen Sequence	RQAPSLPLPGRVGS DTVRGQ ARHPFGFGQVDPN WREVAVG DSTGMARARTSVSQQRHGGG ASSVSASAFASYRQQPSYP QQFPYPQAPFVSQYENYDPA SRTYDQGFVYYPAGGGVGA GAAVASAGVIYPYQPRARY EEYGGGEELPEYPPQGFYPA PERPYVPPPPPPDGLDRRY SHSLYSEGTPGFEQAYDPG PEAAQAHGGDPRLGWYPPYA NPPPEAYGPPRALEPPYLP



Immunofluorescence analysis of mouse eye using LOXL1 Polyclonal Antibody (STJ112229) at dilution of 1:100 (40x lens). Blue: DAPI for nuclear staining.

This product is suitable for in-vitro studies under the RESEARCH USE ONLY [RUO] licence. This product must not be used as for diagnostic or other medical purposes.
St John's Laboratory Ltd, Knowledge Dock Business Centre, University Way, London, E16 2RD | Tel: 0208 223 3081