

Anti-IL36G antibody (1-193) (STJ112204)

STJ112204

GENERAL INFORMATION

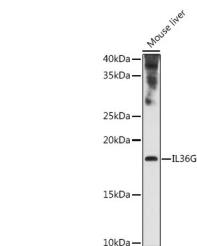
Product Type	Primary antibodies
Short Description	
Applications	WB/IF/ICC/ELISA
Host/Source	Rabbit
Reactivity	Human/Mouse

PRODUCT PROPERTIES

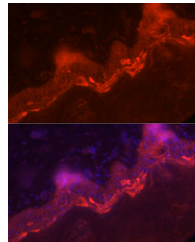
Clonality	Polyclonal
Clone ID	
Concentration	Lot specific
Conjugation	Unconjugated
Purification	Affinity purification
Dilution	WB:1:500-1:1000
Range	IF/CC:1:50-1:200
	ELISA:Recommended starting concentration is 1 μ g/mL. Please optimize the concentration based on your specific assay requirements.
Formulation	PBS with 0.09% Sodium Azide, 50% Glycerol, pH 7.3.
Isotype	IgG
Storage Instruction	Store at -20°C for up to 1 year from the date of receipt, and avoid repeat freeze-thaw cycles.

TARGET INFORMATION

Gene ID	
Gene Symbol	
Uniprot ID	
Immunogen	
Immunogen Region	1-193
Specificity	Recombinant fusion protein containing a sequence corresponding to amino acids 1-193 of mouse IL36G (NP_705731.2).
Immunogen Sequence	MENNEKKNIVYGSDVEMEHE RAGLFVSSAMFSKHPFSTHI SGRETPDFGEVFDLDQQVWI FRNQALVTVP RSHRVTVPVSV TILPCKYPESLEQDKGIAIY LGIQNPDKCLFCKEVNGHPT LLLKEEKILDLYHHPEPMKP FLFYHTRTGGTSTFESVAF GHYIASSKTGNPIFLTSSKKG EYYNINFNLDIKS



Western blot analysis of extracts of various cell lines, using IL36G antibody (STJ112204) at 1:1000 dilution. Secondary antibody: HRP Goat Anti-rabbit IgG (H+L) (STJS000856) at 1:10000 dilution. Lysates/proteins: 25 μ g per lane. Blocking buffer: 3% non-fat dry milk in TBST. Detection: ECL Enhanced Kit. Exposure time: 180s.



Immunofluorescence analysis of human skin cells using IL36G rabbit polyclonal antibody (STJ112204) at dilution of 1:100 (40x lens). Blue: DAPI for nuclear staining.

This product is suitable for in-vitro studies under the RESEARCH USE ONLY [RUO] licence. This product must not be used as for diagnostic or other medical purposes.
St John's Laboratory Ltd, Knowledge Dock Business Centre, University Way, London, E16 2RD | Tel: 0208 223 3081