

Anti-ETHE1 antibody (8-245) (STJ112181)

STJ112181

GENERAL INFORMATION

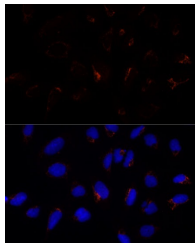
Product Type	Primary antibodies
Short Description	
Applications	WB/IHC-P/IF/ICC/ELISA
Host/Source	Rabbit
Reactivity	Human/Mouse/Rat

PRODUCT PROPERTIES

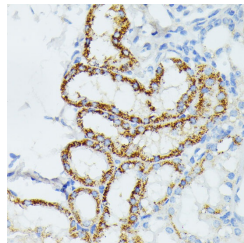
Clonality	Polyclonal
Clone ID	
Concentration	Lot specific
Conjugation	Unconjugated
Purification	Affinity purification
Dilution	WB:1:500-1:1000
Range	IHC-P:1:50-1:200 IF/ICC:1:50-1:200 ELISA:Recommended starting concentration is 1 Mu g/mL. Please optimize the concentration based on your specific assay requirements.
Formulation	PBS with 0.09% Sodium Azide, 50% Glycerol, pH 7.3.
Isotype	IgG
Storage	Store at -20°C for up to 1 year from the date of receipt, and avoid repeat freeze-thaw cycles.
Instruction	

TARGET INFORMATION

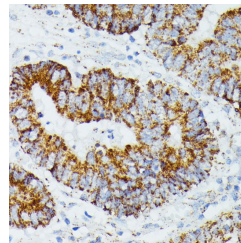
Gene ID	23474
Gene Symbol	ETHE1
Uniprot ID	ETHE1_HUMAN
Immunogen	
Immunogen Region	8-245
Specificity	Recombinant fusion protein containing a sequence corresponding to amino acids 8-245 of human ETHE1 (NP_055112.2).
Immunogen Sequence	VARRQLSQRGSGAPILLRQ MFEPVSCFTFTYLLGDRESRE AVLIDPVLETAPRDAQLIKE LGLRLLYAVNTHCHADHITG SGLLRSLPGCQSVISRLSG AQADLHIEDGDSIRFGRFAL ETRASPGHTPGCVTFVLNDH SMAFTGDALLIRGCGRTDFQ QGCAKTLYHYSVHEKIFTLPG DCLIYPAHDYHGFTVSTVEE ERTLNPRLTSCSEEFVKIMG NLNLPKPQQIDFAVPANM



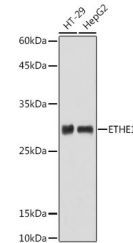
Immunofluorescence analysis of U-2 OS cells using ETHE1 Polyclonal Antibody (STJ112181) at dilution of 1:100 (40x lens). Blue: DAPI for nuclear staining.



Immunohistochemistry analysis of paraffin-embedded mouse kidney using ETHE1 antibody (STJ112181) at dilution of 1:100 (40x lens). Perform microwave antigen retrieval with 10 mM PBS buffer pH 7. 2 before commencing with immunohistochemistry staining protocol.



Immunohistochemistry analysis of paraffin-embedded human colon carcinoma using ETHE1 antibody (STJ112181) at dilution of 1:100 (40x lens). Perform microwave antigen retrieval with 10 mM PBS buffer pH 7. 2 before commencing with immunohistochemistry staining protocol.



Western blot analysis of extracts of various cell lines, using ETHE1 antibody (STJ112181) at 1:1000 dilution. Secondary antibody: HRP Goat Anti-Rabbit IgG (H+L) (STJ/S000856) at 1:10000 dilution. Lysates/proteins: 25 Mu g per lane. Blocking buffer: 3% nonfat dry milk in TBST. Detection: ECL Basic Kit. Exposure time: 180s.

This product is suitable for in-vitro studies under the RESEARCH USE ONLY [RUO] licence. This product must not be used as for diagnostic or other medical purposes.
St John's Laboratory Ltd, Knowledge Dock Business Centre, University Way, London, E16 2RD | Tel: 0208 223 3081